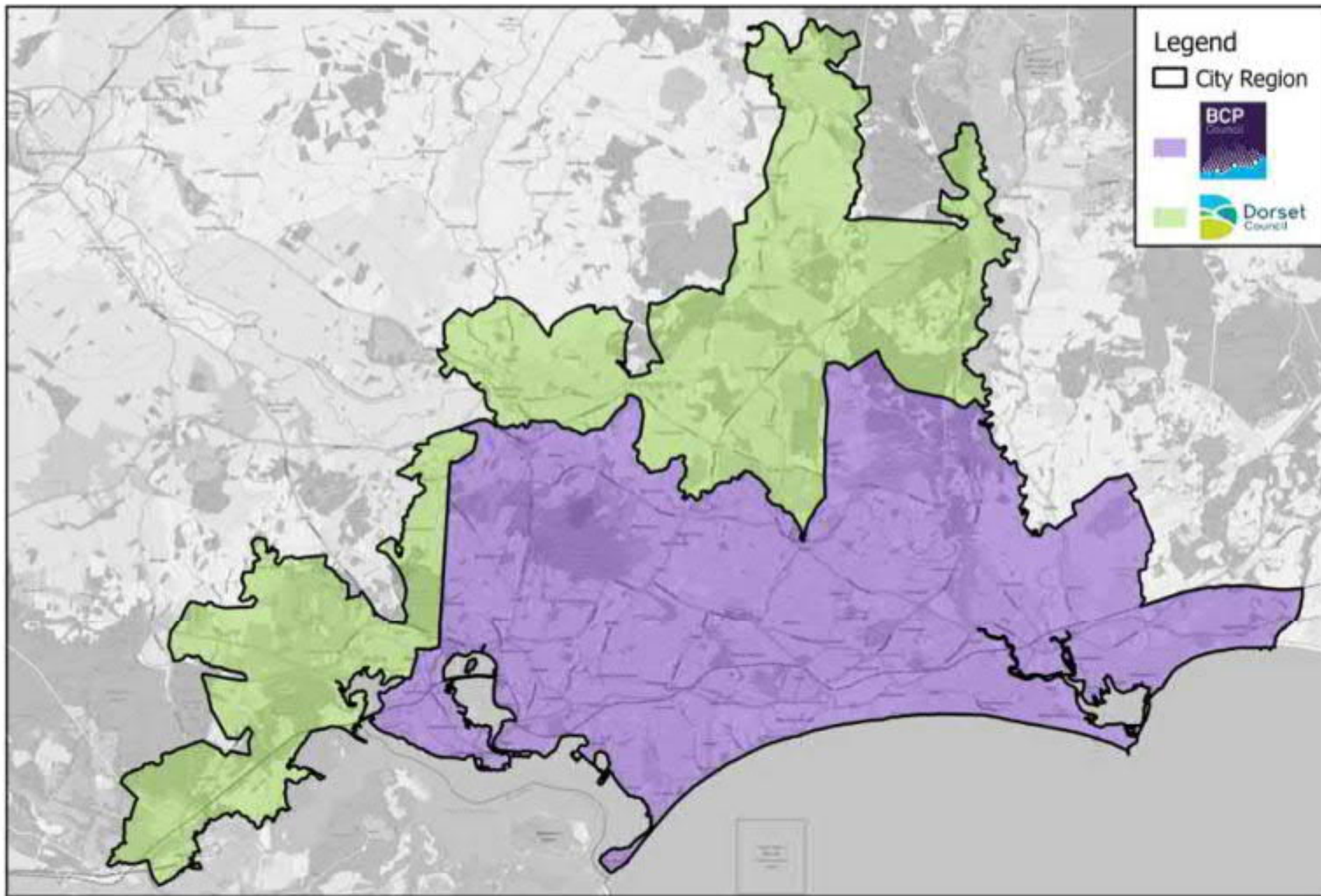


# Appendix A- Plan of TCF SE Dorset City Region





# Appendix B- Proposed 3 Year Delivery Plan





# Appendix C- Summary of Low Ask Schemes



Type	Corridor Designation	Corridor connection	Description
<b>Sustainable Transport Connectivity Corridors</b>	<b>S5</b>	Poole to Ferndown	Connecting Poole town centre and rail station with the key employment location of Ferndown
	<b>S6</b>	North Poole/North Bournemouth	Enabling improved connections on Castle Lane East and West to link up with Wessex fields employment area and Bournemouth Hospital
<b>Cycle Freeways</b>	<b>C1</b>	Lansdowne to Christchurch	This key east-west route connects an important employment area in Bournemouth town centre east via Boscombe to Christchurch via Wessex Fields (another employment area) which includes Bournemouth Hospital. This route has employment sites at both ends and passes through densely populated residential areas;
	<b>C2</b>	Bournemouth to Ferndown	Links Bournemouth town centre, the university campuses, Bournemouth Airport and Aviation Park and the key employment area at Ferndown Industrial Estate. This route links to employment sites and passes through densely populated residential areas
	<b>C3</b>	Wareham to Poole	Connecting local commuter route with Poole town centre, Port of Poole and nearby employment sites completing the final gaps in the existing cycle route between the two locations;
	<b>C5</b>	Merley to Poole	Links significant residential area to key industrial estates, Poole Town centre and Rail station

Proposal Type	Description
<b>Wayfinding</b>	Create a comprehensive network of information totems and signs to enable people to intuitively follow walking and cycling routes both along and to the Connectivity and Cycleway Corridors, key employment/education sites and places of interest/destinations.
<b>HGV Traffic Management System</b>	HGV traffic management system at Longham Bridge (to avoid HGVs becoming stuck on this key freight route into/out of the conurbation).
<b>Expansion of Bike share Scheme</b>	Expansion of bike share scheme into the Christchurch area (note Bournemouth and Poole already have a scheme) and the introduction of E-bikes across the region.
<b>Trip End improvements</b>	The improvement to workplace/education sites 'end of trip' facilities in the vicinity of the Connectivity Corridors and Cycleways to encourage active travel
<b>Bus priority measures</b>	This will include bus priority measures at key traffic signal locations to improve journey times.
<b>Smart ticketing via app</b>	This app will enable users to purchase a multi-modal trip ticket and access a region-wide journey planner app
<b>Bus infrastructure and public realm improvements</b>	This scheme is the upgrade or introduction of shelters, Real Time Information (RTI) and accessibility kerbs at locations that complement the Connectivity Corridors
<b>Safer routes to schools</b>	This scheme will aim to improve infrastructure in the vicinity of schools to encourage active travel

# Appendix D- TCF Governance Framework





## TCF PROPOSED GOVERNANCE

IN ACCORDANCE WITH SOBC WITH A FEW ADDITIONS

Frequency

As required by democratic services

Bi Monthly

Monthly

Weekly  
(2 hour meeting)

As required by Delivery Team Leads

Proposed Members of specific group

All relevant Councillors for BCP and DC

Julian McLaughlin (SRO & Chair), Cllr Hadley, Cllr Rice, Cllr Bryan, Cllr Parkes or Cllr Adkins, Jack Wiltshire

Gary Powell, Richard Pincroft, Marc Griffin, Kate Tunks or Wayne Sayers, Rachael Mills, Legal/Finance (as required)

Marc Griffin, Bob Askew, Claire Clark, Mike O'Gorman, Kate Tunks or Wayne Sayers, Rhys Bright, Tim Forrester, Richard Colby, Rachael Mills, Zoe Davies, Chloe Durrant or Colleague (tbc), Simon Philp, Lynne Wait, Kerry Hall, Hannah Shrimpton, Tim Bird, Eliza Hylands

Links to contacts proposed for workshop in early April found here

[TCF Initial Design Workshop v4](#)

### BCP Cabinet/DC Cabinet

For information purposes - To take place as per current arrangement at BCP/DC. Paper to TAG for info and TRO decisions



### Councils Governance Board – CGB

Cllr Approval/Portfolio Sign Off

*(Note – Needs to have a link with Assurance Framework Review Board as per SOBC) Delegation to CGB from Cabinet for sign off (proposed)*



### TCF Programme Management Board - PMB

*(Note – Needs to have a link with Assurance Framework Review Board as per SOBC)*

Complimented by regular PMB Ops communications/updates from PMT



### TCF Programme Management Team - PMT



### TCF Programme Delivery Team - PDT