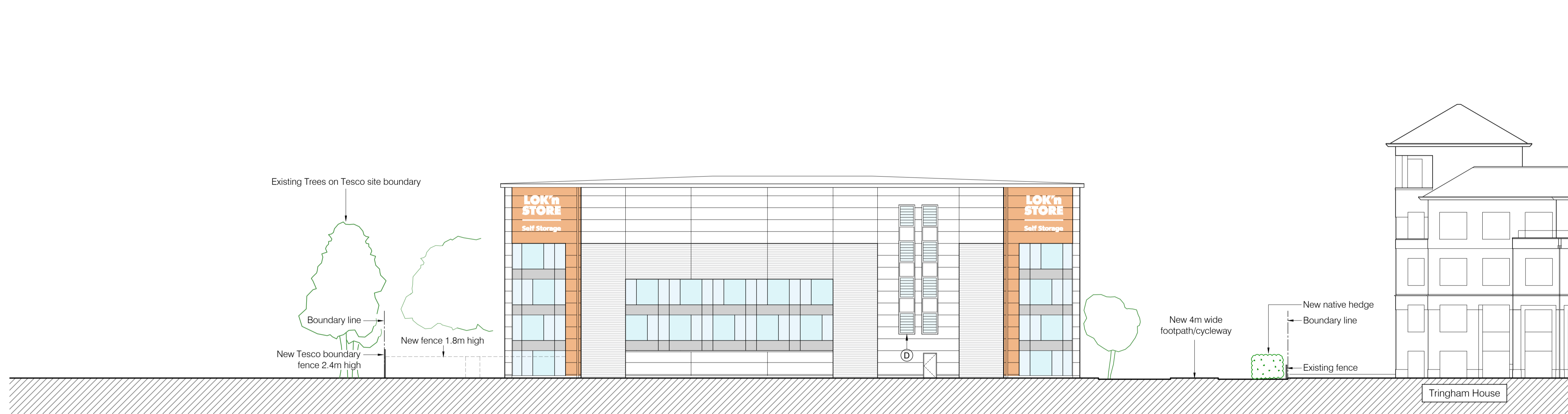
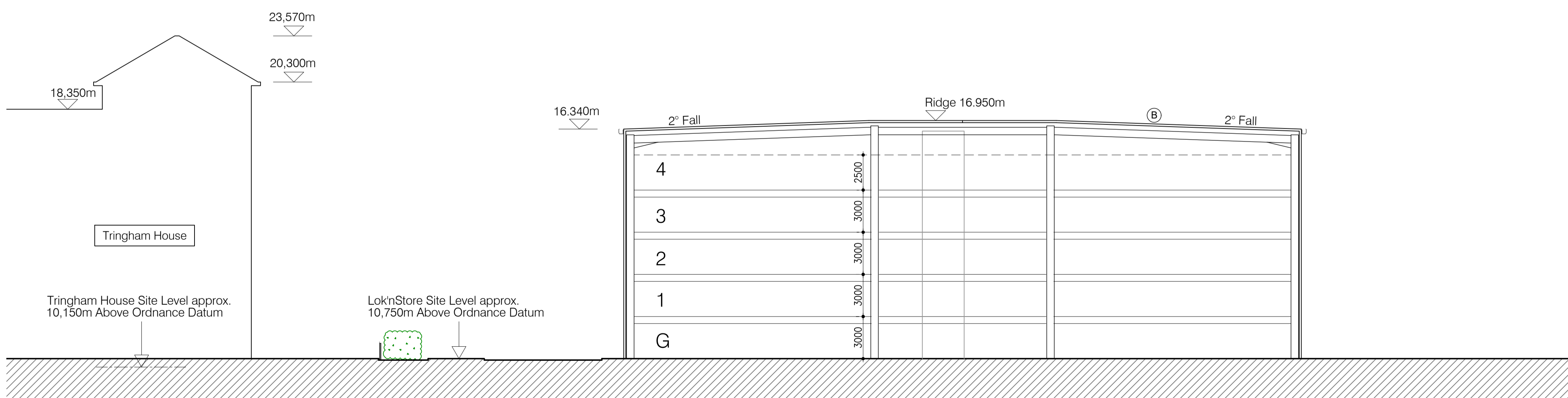


Elevation 1 (South West)



Elevation 2 (North East)



Section A-A

Notes

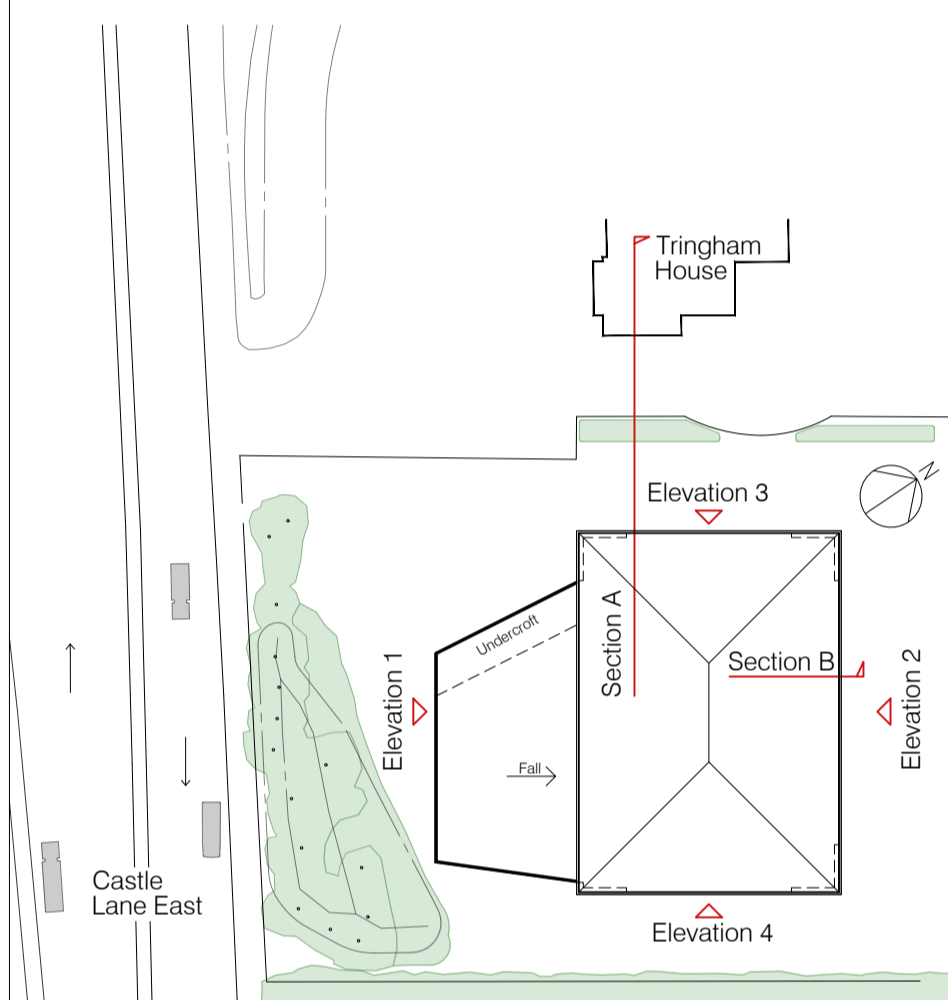
Scaled dimension are not to be used for construction
Contractor to check all dimensions and report omissions and errors to the Architect

Elevation Materials Key

- A - Bi-folding doors with integral glazed panels - Colour: White (RAL 9010)
- B - Insulated single ply roof system - Colour: Mid Grey (RAL 7046)
- C - Undercroft soffit - Flat interlocking panels - Colour: White (RAL 9010)
- D - Glazed smoke louvre system with neutral colour glass / Light Grey spandrel panels

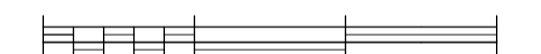
Cladding and Glazing Legend

- 1.0m high x 150mm thick Qbiss One System. Flat modular architectural facade element with expressed joints.
 - External facing material - Colourcoat Prisma (metal)
 - Profile - Flat
 - Colours - Orange (RAL 2008) / White (RAL 9010)
- SSG curtain wall system:
 - Neutral glass
 - Light Grey spandrel panels
- Brickwork:
 - Traditional Brick & Stone Ltd. Brick type: Mystique www.traditionalbrickandstone.co.uk/product/mystique



Reference Plan - 1:1000

0 20 40 60m



Scale Bar 1:1000

0 5 10 15m



Scale Bar 1:200

STATUS	REV	DATE	DESCRIPTION
S2	P4	15/01/20	Minor hatching update
S2	P3	24/12/19	Boundary fences amended
S2	P2	23/12/19	Cladding design revised
S2	P1	17/07/19	INITIAL ISSUE

Forum Architecture Ltd
Studio 52, Basepoint
Andersons Road
Southampton, Hampshire
SO14 5FE
tel: 023 8068 2095

FORUM
architecture
www.forumarchitecture.co.uk

CLIENT
Lok'nStore Limited

PROJECT
**New Lok'nStore facility - Land at Wessex Field
Castle Lane East, Bournemouth**

DRAWING TITLE
**Proposed Elevations and Section
Sheet 2 of 2**

DRAWING STATUS	DWN BY	ORIGINATOR No.
S2: SUITABLE FOR INFORMATION	AB	18019
	CHK BY	SCALE
	PM	1:200 / 1000 @ A1

PROJECT | ORIGINATOR | ZONE | LEVEL | TYPE | ROLE | CLASSIFICATION | NUMBER | REVISION
CLE-FORUM-00-ZZ-DR-A-XX-P303 **P4**