

Health and Well Being Board

Consultation on the
Local Plan & Housing Strategy



Agenda

- Local Plan – presentation (10 mins)
- Break-out discussions (35 mins)
- Housing Strategy – presentation (10 mins)
- Break-out discussions (35 mins)
- Conclusion



BCP Local Plan

Nicholas Perrins

Head of Planning

Regeneration & Economy

&

Mark Axford

Planning Policy Manager

Regeneration & Economy



What is the Local Plan?

- The Local Plan is a statutory document that sets the vision and guides what can be built where, shapes future infrastructure investment and future patterns of development
- The Local Plan is the framework for deciding planning applications
- Supports delivery of BCP Corporate Strategy and other local strategies

What is a healthy place?

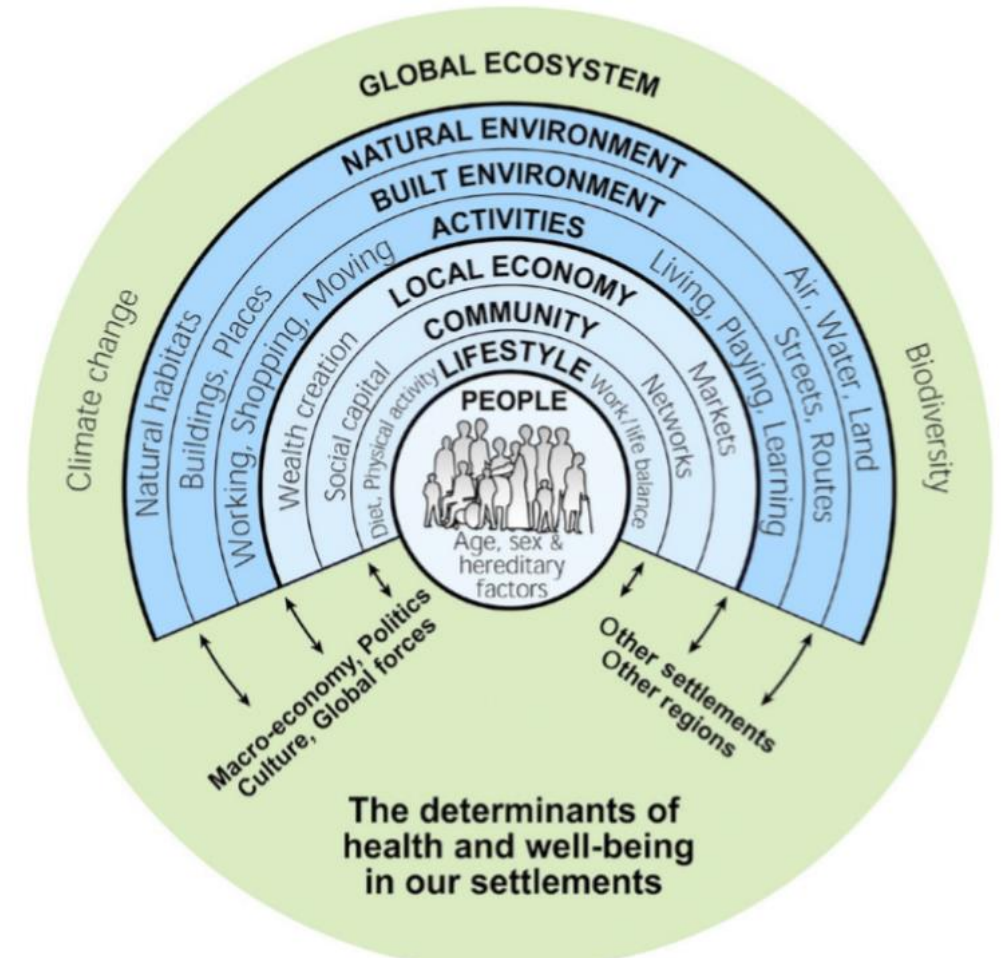
<p>Movement and access Creating a place that prioritises active and inclusive environments which provide easy and safe opportunities for everyone to be physically active through sustainable modes of travel.</p>	<p>Open space play and recreation Delivering a comprehensive network of natural and public open spaces and places which provide for a range of informal and formal activities to happen for everyone's participation and enjoyment.</p>
<p>Food Environment Providing the local community with access to a diversity of food outlets selling healthy food options and the opportunity to grow their own food in designated public and private spaces accessible from the home, school, or workplace.</p>	<p>Buildings Constructing high-quality, human-scale buildings with healthy working and living, internal and external environments that will promote the long-term health and comfort of their occupants.</p>
<p>Neighbourhood spaces and infrastructure Providing improved access to community and health infrastructure to meet local needs, maximising redevelopment and, in the meantime, the use of redundant premises and spaces, and actively seeking opportunities for co-location.</p>	<p>Local Economy Providing a dynamic environment with accessible local industries, services and facilities, which help to secure employment, enterprise, and training opportunities for residents, and attract key workers.</p>

Planning and Health and Wellbeing

NPPF requires Local Plans and Planning to :

- Take account and support delivery of local strategies to improve health, social and cultural wellbeing;
- Include planning policies and decisions should ensure developments create places that are safe, inclusive and accessible and which promote health and wellbeing;
- Consider transport issues and promote opportunities for walking, cycling and public transport use to help public health and air quality;
- Provide access to open space and opportunities for physical activity and recreation;
- Make provision for community facilities such as health, education and cultural infrastructure

THE DETERMINANTS OF HEALTH AND WELLBEING IN OUR SETTLEMENTS



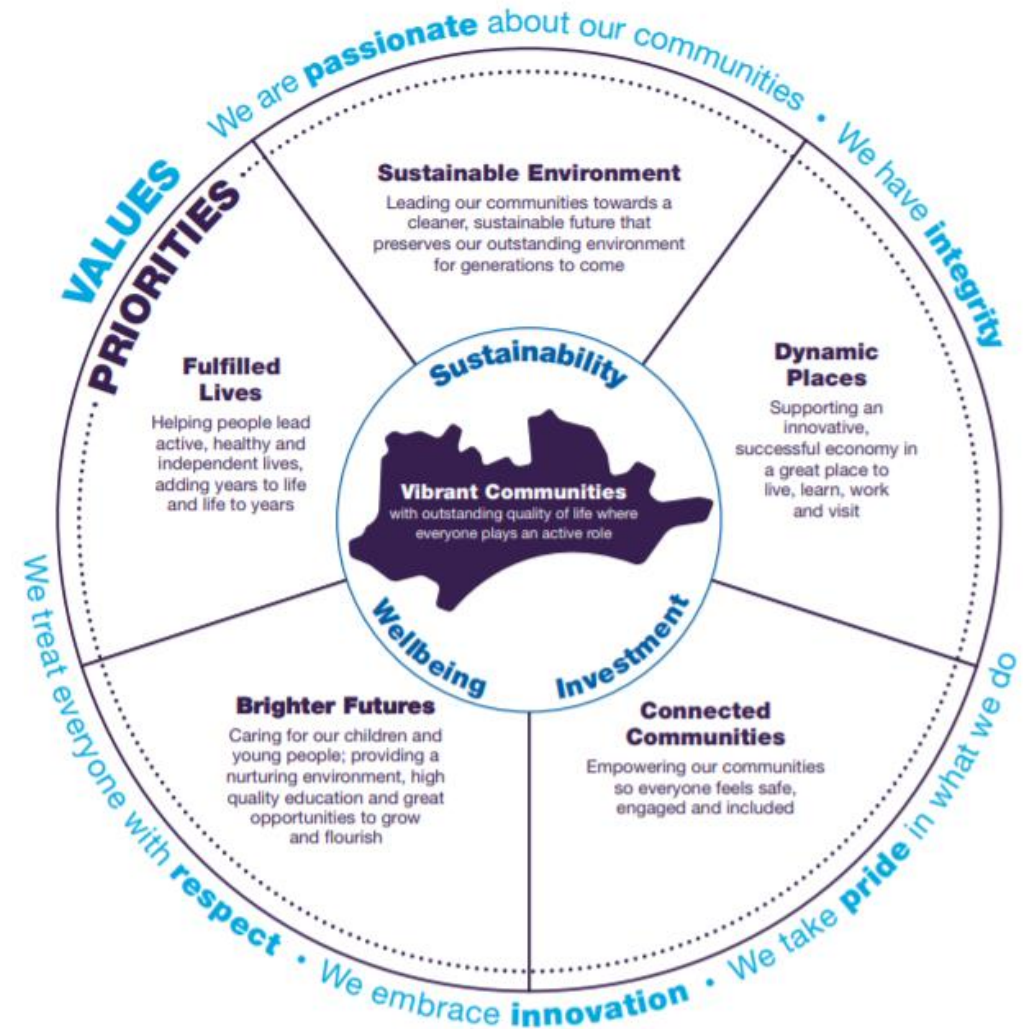
BCP Local Plan Timetable

- Initial issues consultation and call for sites – **Completed 2019**
- Evidence base collected across range of topics – **2020 and ongoing**
- Public consultation to focus in on issues and policy options – **Spring 2021**
- Draft plan preparation – **2021 / 2022**
- Draft plan public engagement – **2022**
- Submit for examination – **2022 / 2023**
- Examination and adopt – **2023**

Local Plan Story so far - 2019 Consultation Results

BCP Council's Corporate Strategy

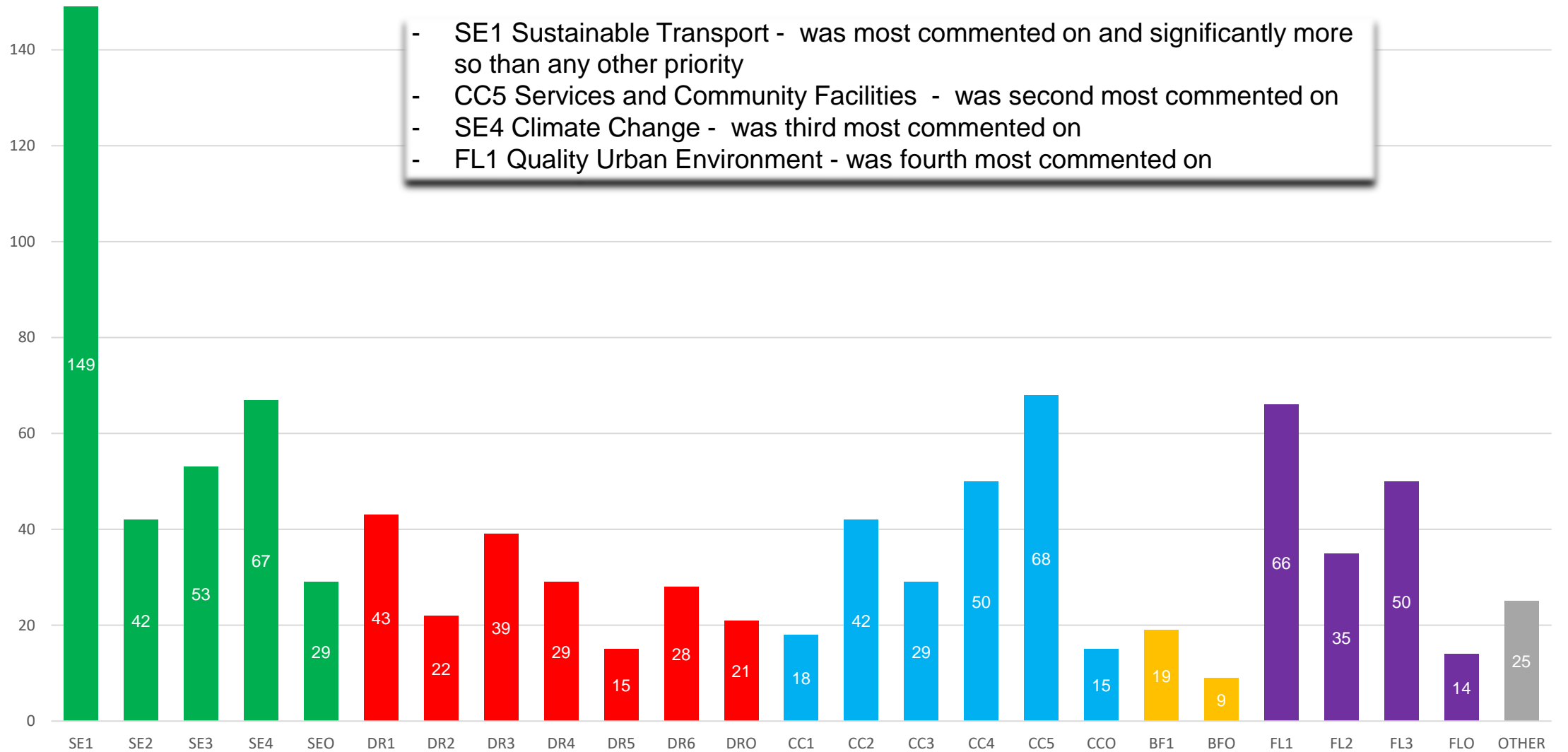
- Questions themed against the Corporate Strategy priorities
- Total of 319 responses from range of individuals, business and community groups



Specific Consultation questions asked...

Issues	Precursor	Question	Code
Sustainable Environment	In planning for sustainable growth, how might we:	manage congestion and increase opportunities for active eco-friendly travel by walking, cycling and public transport?	SE1
		improve access to parks and open spaces?	SE2
		protect and enhance Bournemouth, Christchurch and Poole's exceptional natural environment?	SE3
		tackle the challenges posed by climate change?	SE4
	Other		SEO
Dynamic Region	In planning for the economy, how should we:	revitalise Bournemouth, Christchurch and Poole's town and local centres so that they provide complementary shopping experiences?	DR1
		plan for future business growth and deliver better paid jobs?	DR2
		balance the need for new homes to meet the challenging targets required, whilst retaining local character?	DR3
		maximise delivery of affordable homes for local people?	DR4
		deliver specialist accommodation to meet the needs of the ageing population?	DR5
	support and develop Bournemouth, Christchurch and Poole's tourism sector?	DR6	
Other		DRO	
Connected Communities	In empowering our communities, how should we:	shape growth to ensure that the individual identities of Bournemouth, Christchurch and Poole are retained?	CC1
		ensure the delivery of high quality and attractive urban environments?	CC2
		strengthen cultural identity and preserve or enhance our historic environment?	CC3
		plan for safe, mixed and socially inclusive communities?	CC4
		ensure essential services and community facilities are easily accessible to everyone?	CC5
Other		CCO	
Brighter Futures	In caring for our children and young people, how might we:	plan for the provision of high quality educational facilities?	BF1
	Other		BFO
Fulfilled Lives	In helping people lead active, healthy and independent lives, how should we:	provide accessible, well connected, high quality urban environments and public open spaces?	FL1
		provide the opportunities for people to make healthy lifestyle choices?	FL2
		improve air quality by reducing reliance on the motor car?	FL3
Other		FLO	
Other	Anything unable to be categorised in the above issues.		OTHER

160



- SE1 Sustainable Transport - was most commented on and significantly more so than any other priority
- CC5 Services and Community Facilities - was second most commented on
- SE4 Climate Change - was third most commented on
- FL1 Quality Urban Environment - was fourth most commented on

Fulfilled Lives

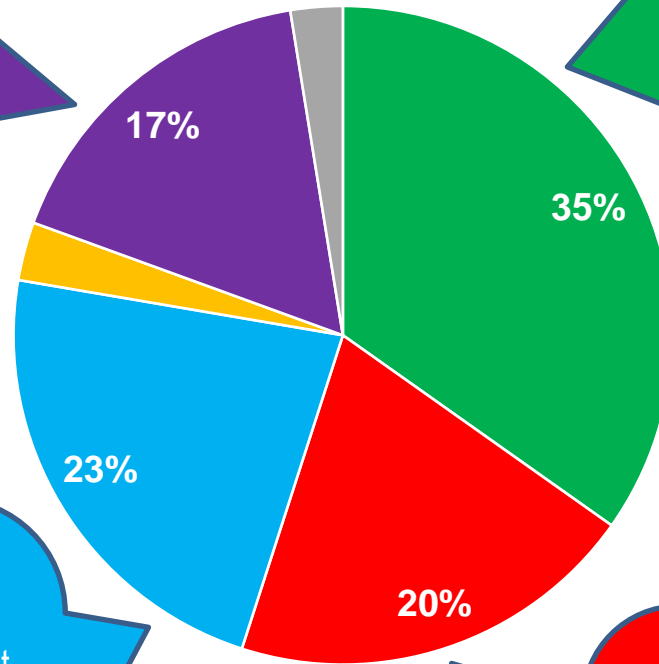
- Better cycling provision needed
- Better walking provision
- Role of arts and culture important to shaping BCP image
- Need to retain open spaces
- Improve management of open spaces and facilities
- Better facilities needed for young people and all year round weather facilities

Brighter Futures

- More investment in schools needed
- More schools needed for new development
- More innovative education needed
- Investment in outdoor education centres

Connected Communities

- Existing lack of services (doctors, schools and hospitals)
- Increased pressure upon services from new development
- Better transport links needed to Bournemouth hospital
- More innovative public transport needed (ie along the beach promenade)
- Must protect the special character of places
- Beggars and/or homeless problems in town centres
- Antisocial behaviour and safety concerns in certain areas
- Night time economy in town centres and balance with other users
- HMOs and associated problems
- Traveller sites and need for community consultation



Sustainable Environment

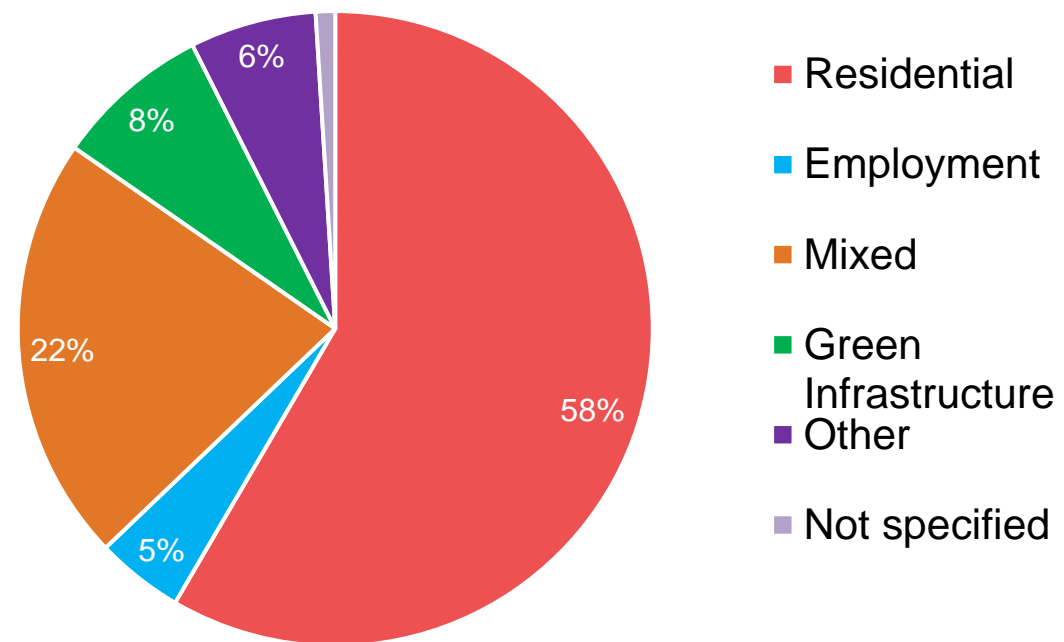
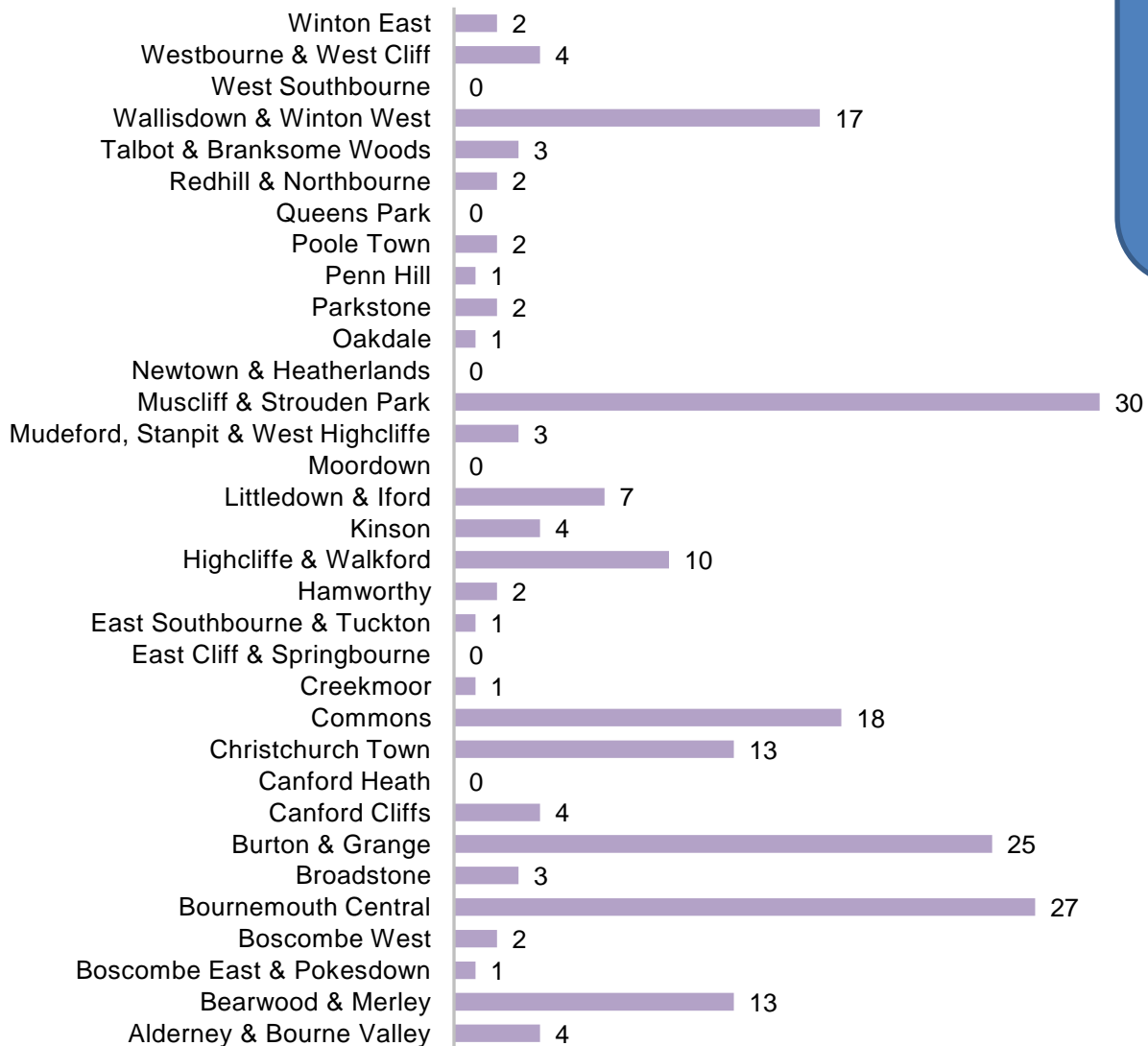
- Too much existing traffic congestion
- Increased traffic congestion from new development
- Road maintenance needs improving
- New road infrastructure needed
- Regional transport links need improving
- Better cycling provision needed
- Better public transport needed
- More innovative public transport alternatives needed
- Car parking requirements needs balancing
- Protect and enhance the Green Belt
- Protect the special natural environment and wildlife
- Protect and plant more trees
- More aspirational climate change measures needed to be carbon free
- Re-consider more innovative renewable projects (ie Navitus Bay)

Dynamic Region

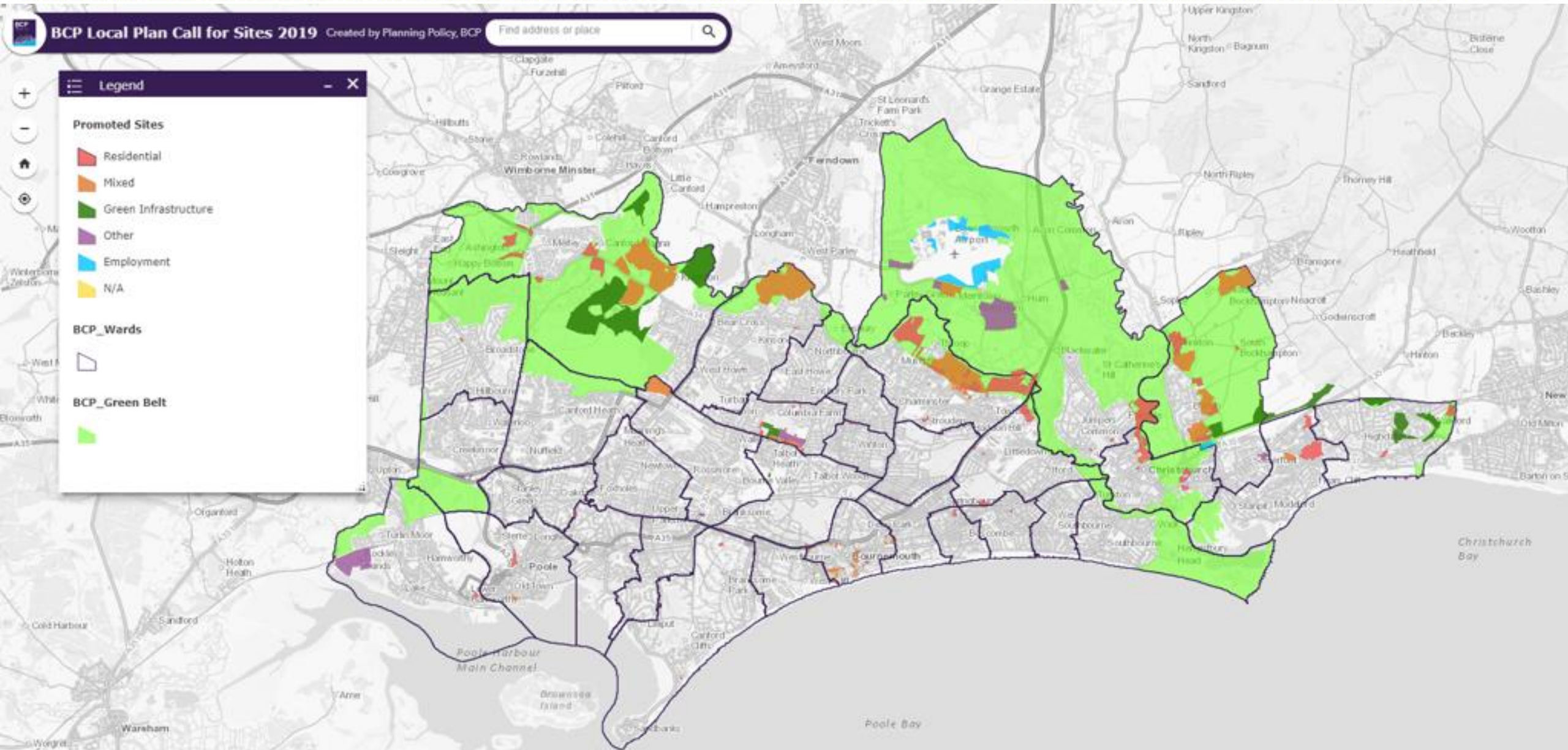
- Improve the appearance of all three town centres
- Address homelessness and beggars in town centres
- Better tourist facilities are needed in Bournemouth
- Poole town centre and bus station needs revitalising and uplift
- Use link more between arts and culture to town centres and tourism
- Review car parking in town centres and charges
- Challenge housing numbers and reduce target
- Need to deliver more affordable housing
- Need to prioritise and redevelop brownfield sites first
- Need to utilise empty homes and offices
- Too many flats are being built and not enough houses

Call for Sites

- Total of 202 sites promoted and currently being assessed.
 - Approximately 1/3 of sites known of.
 - 74 of the sites are within Green Belt.



Submitted Sites

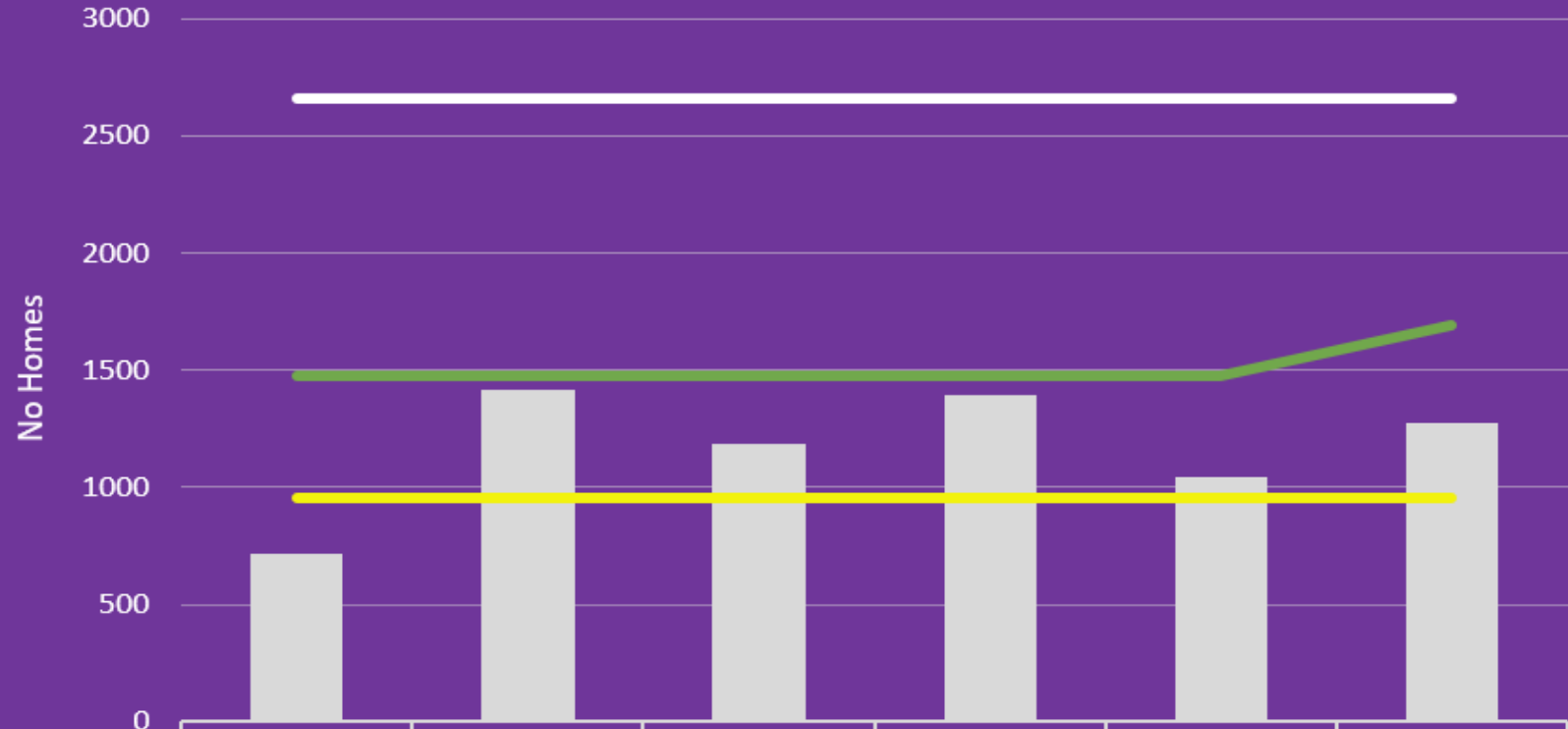


Key Issues for Local Plan to address

- Housing needs – Govt. method (based on 2014 data) sets minimum housing requirement of **2,670 dwellings per annum**
- Future role of town centres
- Design and quality of development
- Access to open space and recreation
- Climate change
- Movement and access
- Patterns of development
- Delivery of supporting infrastructure and community facilities
- Type of housing to meet needs of population change
- The economy and access to jobs

Housing Delivery compared to annual requirements

Comparing past housing performance against alternative housing targets in the BCP Council area



	2013/14	2014/15	2015/16	2016/17	2017/18	2018/19
BCP Homes completed	720	1416	1182	1396	1042	1272
Local Plans target	1479	1479	1479	1479	1479	1689
Housing target using standard method based on 2014 household forecasts	2655	2655	2655	2655	2655	2655
Housing target using standard method based on 2018 household forecasts	954	954	954	954	954	954

Questions for Breakout Session



- From your perspective, how well has the planning system worked to deliver healthy places, and how does it need to improve in the future?
- What do you think are the top 3 health and wellbeing issues that the BCP Local Plan needs to focus on?
- Given BCP's significant housing pressures, what strategic options should the Council consider in its Local Plan, and do you have a preferred option in the context of the health and wellbeing agenda?
- How would you like to be engaged in the Local Plan process from here on?

A new BCP Housing Strategy

Lorraine Mealings

Director of Housing

Environment and Community

&

Kerry Ruff

Housing Enabling Manager

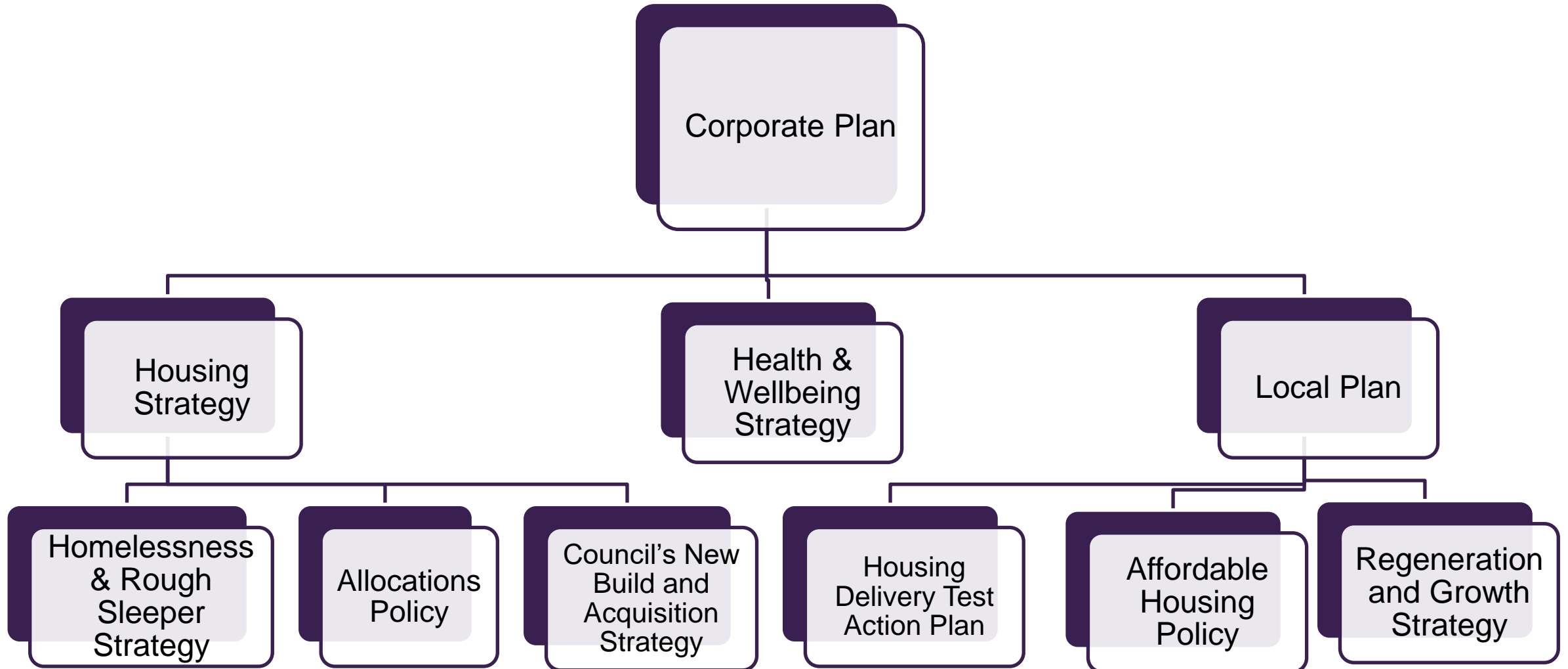
Environment and Community




The importance of a Housing Strategy

- To set out a clear vision and strong leadership for BCP on Housing matters
- To deliver outcomes that fulfil the priorities
- Ensure housing is integrated as a key component of;
 - Corporate Strategy
 - Local Plan
 - Health & Wellbeing Strategy

Housing Strategy Hierarchy



Housing & Health (The Marmot Review)

An aerial photograph of a residential neighborhood with numerous houses, trees, and streets. The houses are mostly two-story buildings with brown roofs and light-colored walls. There are green lawns and trees scattered throughout the area. The streets are paved and have some parked cars.

“Creating a fairer society is fundamental to improving the health of the whole population and ensuring a fairer distribution of good health. Inequalities in health arise because of inequalities in society – in the conditions which people are born, grow, live, work and age. “

Cross Cutting Issues

- Housing cuts across many other service areas
- Important to identify within the “Issues & Opportunities“ consultation paper
- Consultation will be key with;
 - Internal BCP Services
 - External Stakeholder Partners
 - Local Residents / General Public

Housing Vision for BCP

An aerial photograph of a residential neighborhood with numerous houses, green spaces, and trees. The houses are mostly two-story buildings with brown roofs. There are several streets and parking areas visible. The overall scene is a typical suburban residential area.

Influencing our area to make a positive difference in housing and improve lives

Proposed housing priorities

- 1. Meeting future growth needs**
- 2. Preventing Homelessness and Rough Sleeping**
- 3. Improve housing options, opportunities and choice for all**
- 4. Empower and co-create neighbourhoods where residents wish to live and be part of the community**
- 5. Improve safety and sustainability of all housing across BCP**

Key Ambitions within the Priorities

- The Council playing its part in delivering new homes by building out its surplus site pipeline at scale and pace across all tenure types
- Making sure that homelessness is prevented as much as possible through proactive early intervention and support needs
- Proactively understanding unmet specialist housing, care and support options for our most vulnerable and bringing additional housing schemes forward to help meet needs
- Making our 10,000 Council Housing stock even better in meeting the needs of our tenants
- Making sure fire safety across all our homes is top of our agenda

Meeting future growth needs

- Increase the supply of new homes through working with developers
- The Council to deliver a pipeline of at least 1,000 new homes using surplus owned land and acquire additional land and properties where appropriate
- Engagement and consultation to ensure the BCP Local Plan delivers the homes the area needs
- Develop a new affordable housing policy with supporting guidance
- Partnership work to deliver large regen development projects
- Seek to attract investment into our area
- Consider how new developments can incorporate wider benefits

Preventing Homelessness and Rough Sleeping

- Ensure no one sleeps rough or lives in places which aren't designed as a home, such as tents, vehicles, squats or non-residential buildings
- Anyone staying in emergency or temporary accommodation has a rapid rehousing plan specifying their appropriate move-on housing
- Everyone threatened with homelessness is provided with the advice, assistance and support they need to prevent their homelessness

Improve Housing options, opportunities and choice for all

- To continue working collaboratively with housing providers and developers to bring forward more homes for vulnerable people that offer a range of housing options and provide local leadership on what is required for the area.
- Work collaboratively with all stakeholders to ensure;
 - Families and children
 - Care experienced Young People (Care Leavers)
 - Older persons
 - Any other complex or specialist needs are being met

Empowering and co-creating neighbourhoods where residents wish to live and be part of the community

- Housing Management services embrace the Govt. White Paper “Charter for Social Housing Residents”
- Ensure our regeneration schemes promote communities
- Residents have engagement opportunities on housing matters
- Private Sector Housing Standards are effectively managed
- Tackle the number of empty properties in communities

Improve safety and sustainability of all housing across BCP

- To ensure Fire Safety requirements and regulations are followed, implemented and where necessary enforced
- Our stock is well managed and maintained and investment is made to provide sustainable efficiencies to residents homes.
- Work with the private sector to take steps towards meeting our climate emergency commitments
- Work collaboratively to ensure developments consider design aspects that encourage;
 - Safer communities
 - Community cohesion

Timetable for the BCP Housing Strategy

Dates	Action
Nov / Dec 2020	Develop a draft “Issues and Opportunities” Housing paper to consult on
Dec 2020 / Jan 2021	Internal engagement / consultation with members, relevant groups and services
Feb 2021 – April 2021	Public Consultation (10 weeks) on Housing paper online, to include virtual meetings for stakeholder engagement session and social media
Early April 2021	End of consultation period
March / April	Housing Needs and Market Assessment report becomes available for BCP (jointly commissioned with Dorset Council)
June 2021	Endorsement and adoption by the Council of the finalised BCP Housing Strategy

Housing Strategy Consultation Questions

- From your perspective, what do you think are the key issues for Housing in relation to health and well-being?
- Do you think there are opportunities across the partnership to improve housing outcomes?
- What is your overall feedback on the proposed Housing Strategy?
- What do you think are the top three priorities that we need to focus on?



NEXT STEPS & THANK YOU
