

SEND Learning and Improvement Plan (LIP) Outline and Headlines



Our responsibility as partners

Children and young people with special educational needs and disabilities in BCP:



- Are some of our most vulnerable young residents
- Have high aspirations that they want to achieve in their future – from travelling the world, writing songs, to making a difference in their community and having their own home; they want to be doctors, footballers, carpenters, youth workers and DJs – and some aren't sure yet
- Have a huge range of abilities and needs



Some of the things Children and Young People with SEND have told us



Our Vision

Brighter Futures

Caring for our children and young people; providing a nurturing environment, high quality education and great opportunities to grow and flourish



Children and young people with SEND have brighter futures, fulfilled lives and are part of their local communities:

- experiencing inclusion in every aspect of their lives
 - achieving their full potential
- being partners, alongside their families, in developing provision and services

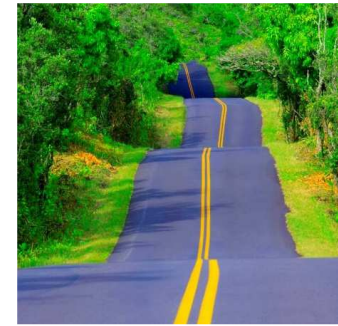
How can you help us on our improvement journey?



Priority areas:

Strong leadership and governance

Co-Producing - individual, service, strategic



Education that's inclusive, supporting children & young people to achieve their full potential

Young people being prepared for adulthood, within their local community

Joint Commissioning

Leadership & Governance

Areas experiencing improvement	Evidence
Strong partnership working, underpinned by SEND & Inclusion Strategy (May Cabinet)	<ul style="list-style-type: none"> • Work of the SEND Improvement Board and Working Groups • External support and challenge secured for improvement priorities (with external funding)
Commitment of SEND Improvement Board as corporate parents	
Increased Dedicated Clinical Officer (DCO) capacity at Dorset CCG	
Partnership audits of EHCPs including lived experience of parent carers	
External learning	
Areas in need of improvement	Evidence
Timeliness and backlogs for EHC assessment and Annual Reviews	<ul style="list-style-type: none"> • 52.9% of new EHCPs issued within 20 wks (March 21), gradually increasing since Oct 20. • 86.7% of EHCP C&YP have had an Annual Review meeting by school, but 1,112 annual reviews are in progress and not completed by LA. • Projected overspend HNB • Higher than average placements in Independent & Non Maintained (11.5% March 21)
Lived experience of children and young people informing audits	
Reducing overspend the High Needs Block Budget	
Embedding the new SEND Quality Assurance Framework across the system	

Co-Production

Areas experiencing improvement	Evidence
Co-production charter co-produced and agreed	<ul style="list-style-type: none"> Feedback from Parent Carers Together (PCT) on the working relationship
“Working together to make things better” – work by 45 children and young people	
Co-production of forms and templates related to EHCP processes	
Trust and transparency in working relationships	<p style="text-align: right; font-weight: bold; margin: 0;">SEND</p> <p>Bournemouth, Christchurch and Poole Co-production Charter for children and young people with special educational needs and disabilities</p> <p>What is Co-production? Co-production means working with people as equal partners in design, development, commissioning, delivery and review of services to create better outcomes. <i>All voices are equal.</i></p> <p>There are good reasons why we should co-produce:</p> <ul style="list-style-type: none"> • it leads to better services that improve people's lives • we can all learn from experience together • it's empowering and respectful when we come together • there is a legal requirement to co-produce in the Children and Families Act, the Care Act and in the NHS Constitution.
Parent carers part of recruitment of key posts	

The Co-production Charter lays out five principles that all parties will use to work together in the right way

<p>We listen to everyone</p> <p>We take the views of all parents, carers, children, young people and practitioners seriously. No-one should feel that they have to fight to be heard.</p>	<p>We empower people</p> <p>We share the information everyone needs to know to take part in decision making. We provide support and advice where needed.</p>	<p>We co-produce from start to finish</p> <p>We set the scope, agenda, key decisions and review progress together. Everyone is invited to the right meetings and made to feel welcome.</p>	<p>We are person centred and solution focused</p> <p>We do not put barriers in the way of good ideas and do not hide behind policy and protocol for reasons why things cannot be done.</p>	<p>Everyone is enabled to take part</p> <p>We make sure that everyone can participate. Meetings are held at convenient times, accessible venues are used, interpreters are arranged.</p>
--------------------------------------------------------------------------------------------------------------------------------------------------------------------------------------------------	---------------------------------------------------------------------------------------------------------------------------------------------------------------------	---------------------------------------------------------------------------------------------------------------------------------------------------------------------------------------------------	---------------------------------------------------------------------------------------------------------------------------------------------------------------------------------------------------	-------------------------------------------------------------------------------------------------------------------------------------------------------------------------------------------------

Co-production should happen at all levels of service delivery:

- individual** - we take a person centred approach
- operational** - we deliver services in a way that works for the community
- strategic** - we take all big decisions in partnership



Areas in need of improvement	Evidence
Regular and meaningful engagement post Covid with children and young people and parent carers (keeping the benefits of new virtual ways of engaging)	<ul style="list-style-type: none"> Engagement limited during Covid due to being virtual Feedback from parent carers and young people about how they want to access to information
Embedding co-production across partners	
Effective communication with young people and parent carers about process, support and services	

Education

Areas experiencing improvement	Data Evidence
Supporting children and young people's mental health in education settings	<ul style="list-style-type: none"> • New Mental Health Support Team working with increasing number of settings in BCP • Early Years Transitions Charter co-produced • 88% of the children reported that the sessions helped them settle into school • Transition Framework co-produced
Schools actively engaged in creating an Education Quality Mark for Inclusion	
Support for transitions: <ul style="list-style-type: none"> - from Early Years to School - Year 6 to 7: Universal offer in place and 16 targeted groups were delivered across 16 schools and 57 children attended - Key Stage 2 to 3 	

Areas in need of improvement	Data Evidence
Inclusion in schools	<ul style="list-style-type: none"> • Persistent Absence has improved slightly Autumn 2019 to Autumn 2020 but is slightly higher than National • NEETs at 10.8% at year end compared to 8% last March. • Reduction in exclusions, 8.8% for SEN Support and 8.0% for EHCP (impacted by Covid).
Young people with SEND not in education, employment or training (NEETs)	
The impact of Covid – lost learning, impact on transitions and mental health and wellbeing	

Preparation for Adulthood (PfA)

Areas experiencing improvement	Data Evidence
Community based learning offer piloted 2020/21 (challenging during Covid)	<ul style="list-style-type: none"> • ‘Transition navigator’ post created and recruited to
Supporting young people with an EHCP preparing to move into adulthood (across housing, health, social care, benefits, community participation and employment)	<ul style="list-style-type: none"> • Moving online the annual employers/providers showcase event for YP with SEND, promoting PfA and high aspirations
Increasing number of schools have an Enterprise Coordinator (EC) linked to the Careers Hub	
Personal Budget Policy in place	<ul style="list-style-type: none"> • Increasing number of schools with an Enterprise Coordinator (28 of 34)
Strengthening (or adapting given Covid) support to young people with SEND into employment	

Areas in need of improvement	Data Evidence
Impact of Covid and economic climate is affecting many aspects of PfA including community based learning opportunities and employment opportunities	
Making changes which young people tell us will help make the wider community of BCP feel a more inclusive place to live	<ul style="list-style-type: none"> • What young people have told us
Embedding high aspirations for adulthood, and providing practical opportunities in the curriculum across schools and colleges for young people with SEND	
Suitable independent housing options	

Joint Commissioning

Areas experiencing improvement	Data Evidence
Commitment and partnership working on joint commissioning	<ul style="list-style-type: none">• Joint commissioning strategy in place• SENDiass jointly commissioned• Multi Agency Resource Panel in place• New CETRs for Dorset CCG in post; system wide training underway
Embed a framework and practice guidance across the system for Care & Education Treatment Reviews (CETRs) New Care & Treatment Review Co-ordinator for Dorset CCG in post	
External review of sufficiency and provision	

Areas in need of improvement	Data Evidence
Large scale and longer time frame pieces of work underway on pathways for children and young people with: <ul style="list-style-type: none">- speech, language and communication needs (SLCN)- social, emotional and mental health needs (SEMH)- autism	<ul style="list-style-type: none">• Feedback from families, use of provision/graduated response

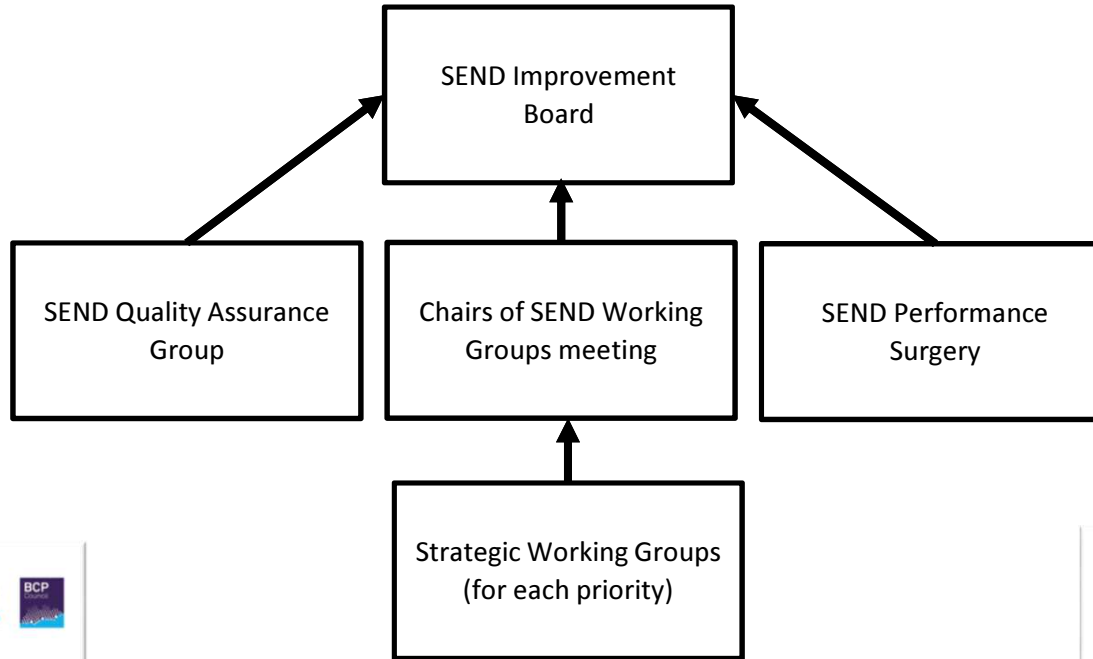
Cross cutting challenges we are tackling

- Embedding system wide culture change
- Inclusion
- Impact of Covid on children and young people and their families, especially in relation to PfA
- Responding to increasing need and complexity of need
- Pace and impact

Governance

Giving a clear line of sight across the system and partners

Cabinet, Overview & Scrutiny, wider partnership boards



SEND LIP Progress Summary March 2021

Completed by: Claire Webb, SEND Improvement Programme Manager

Summary of RAG comparisons	RAG	Description	Dec 2020	Jan 2021	Feb	March
Green	On track - no problems (includes if the action is completed but not yet embedded)	10	11	13	14	
Amber	Issue - but it is manageable	43	44	42	40	
Red	Needs escalating or intervention for a resolution	3	1	1	3	
Blue	Completed and embedded	2	3	3	3	
Blank	Not yet started	2	2	2	2	

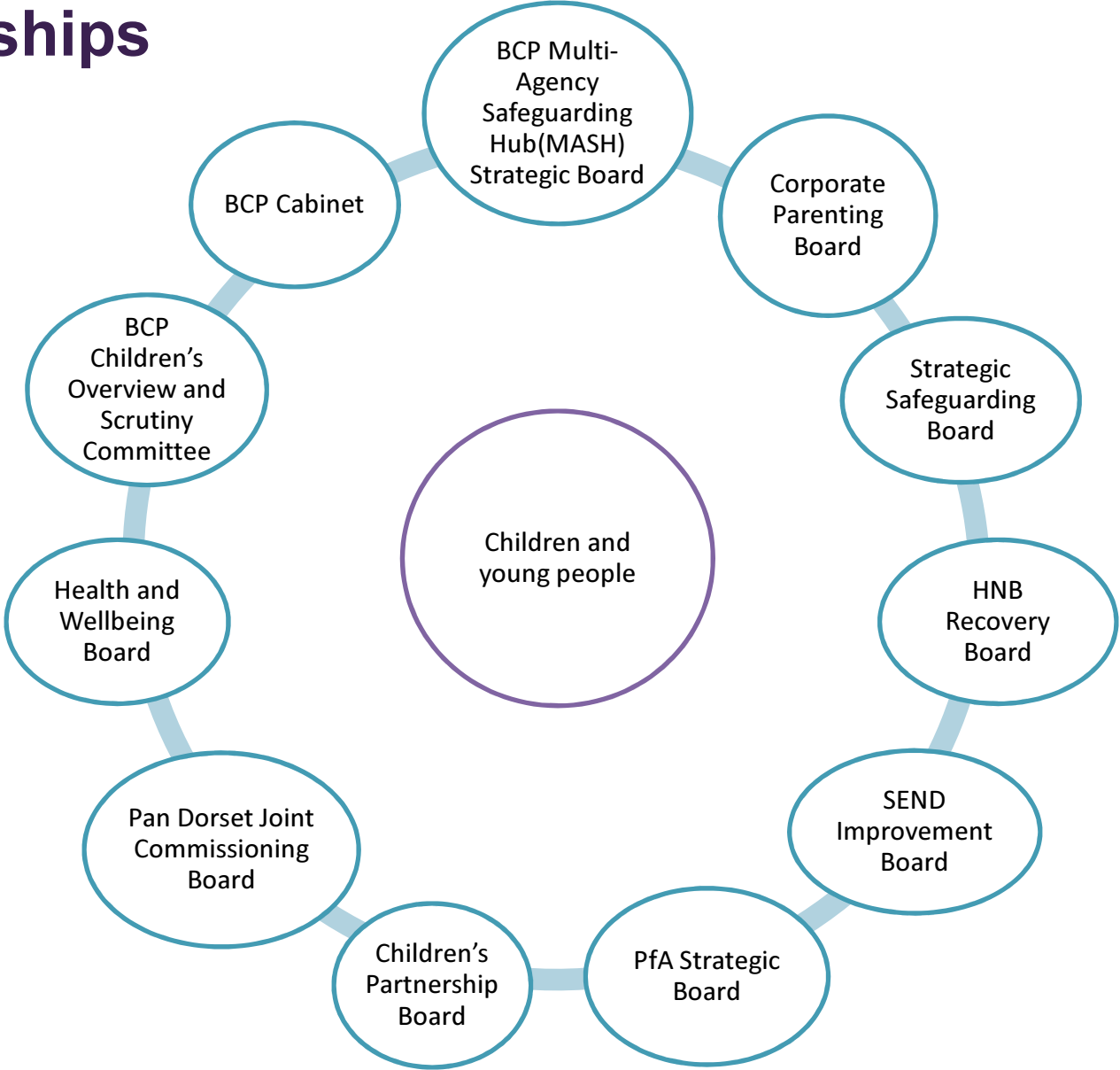
Action 11 relating to embedding our commitment of corporate parenting and action 13 regarding DSDG (quality, timeliness and clearing the backlog) are both now RED - see exception report.

Summary of impact	RAG	Description	Dec 2020	Jan 2021	Feb	Mar
Green	On track	3	3	3	3	
Amber	Issue - but it is manageable	13	13	13	11	
Red	Not on track to achieve impact - needs escalating or intervention for a resolution	3	3	2	2	
Blue	Impact achieved and embedded/customised	0	0	0	0	
Blank	No impact yet	41	43	43	41	

The same 3 actions remain rated RED for impact (as previously reported):

- 2 relate to DSDG, as previously reported through the performance exception report
- 1 relates to the expected upward in the high needs block despite actions taken through the SEND Recovery Plan. Actions taken to address this were reported to O&S in Dec and Jan, and progress continues to be reported through the LIP

Partnerships



Thank you