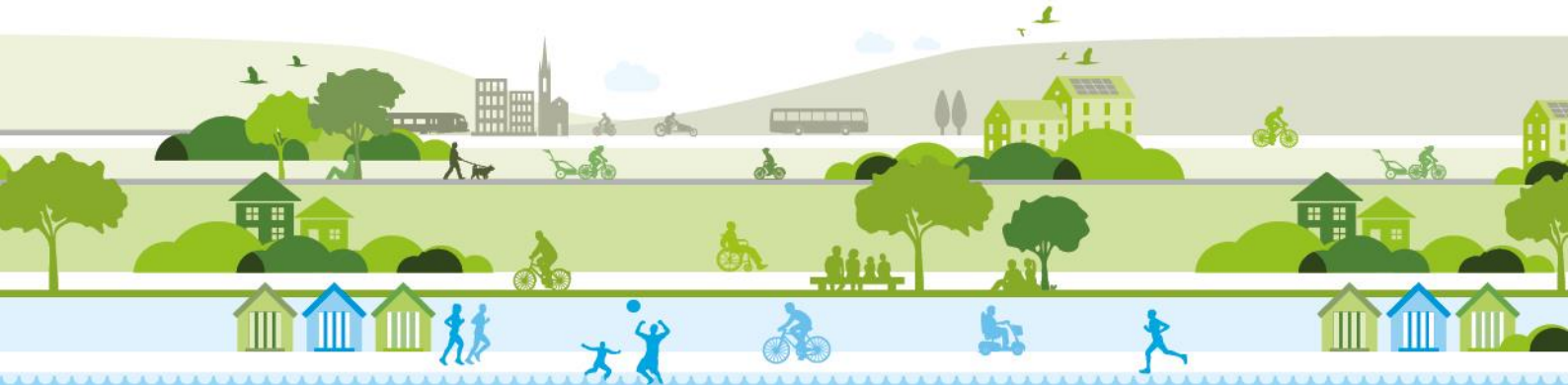
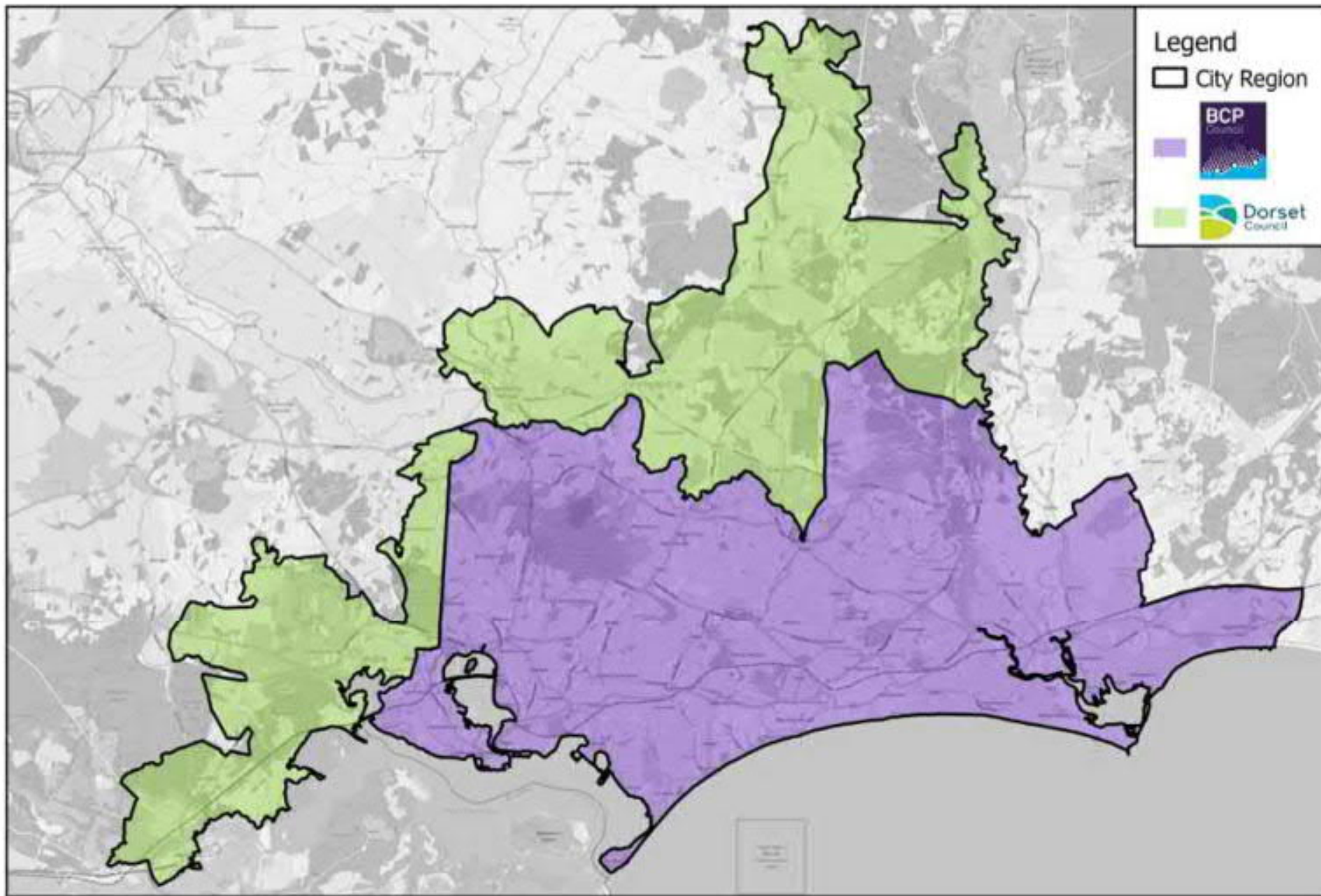




greener | healthier | better connected

Appendix A- Plan of TCF SE Dorset City Region

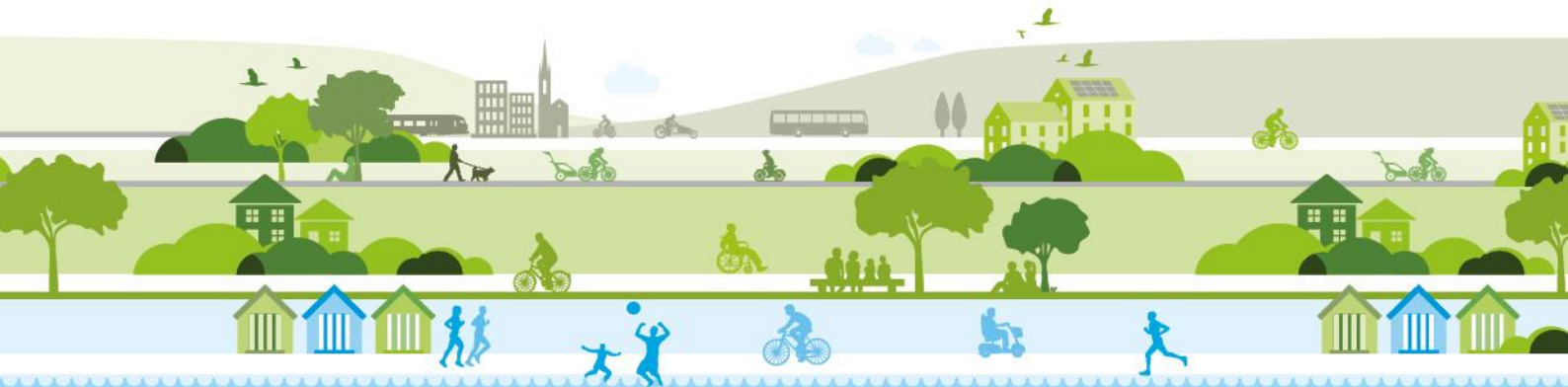






greener | healthier | better connected

Appendix B- Summary of Low Ask Schemes



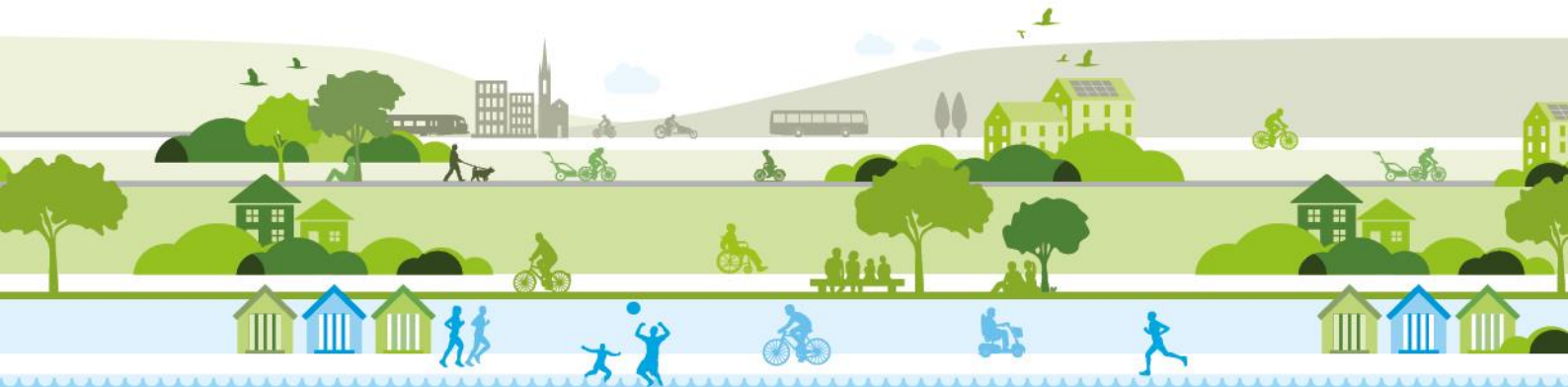
Type	Corridor Designation	Corridor connection	Description
Sustainable Transport Connectivity Corridors	S5	Poole to Ferndown	Connecting Poole town centre and rail station with the key employment location of Ferndown
	S6	North Poole/North Bournemouth	Enabling improved connections on Castle Lane East and West to link up with Wessex fields employment area and Bournemouth Hospital
Cycle Freeways	C1	Lansdowne to Christchurch	This key east-west route connects an important employment area in Bournemouth town centre east via Boscombe to Christchurch via Wessex Fields (another employment area) which includes Bournemouth Hospital. This route has employment sites at both ends and passes through densely populated residential areas;
	C2	Bournemouth to Ferndown	Links Bournemouth town centre, the university campuses, Bournemouth Airport and Aviation Park and the key employment area at Ferndown Industrial Estate. This route links to employment sites and passes through densely populated residential areas
	C3	Wareham to Poole	Connecting local commuter route with Poole town centre, Port of Poole and nearby employment sites completing the final gaps in the existing cycle route between the two locations;
	C5	Merley to Poole	Links significant residential area to key industrial estates, Poole Town centre and Rail station

Proposal Type	Description
Wayfinding	Create a comprehensive network of information totems and signs to enable people to intuitively follow walking and cycling routes both along and to the Connectivity and Cycleway Corridors, key employment/education sites and places of interest/destinations.
HGV Traffic Management System	HGV traffic management system at Longham Bridge (to avoid HGVs becoming stuck on this key freight route into/out of the conurbation).
Expansion of Bike share Scheme	Expansion of bike share scheme into the Christchurch area (note Bournemouth and Poole already have a scheme) and the introduction of E-bikes across the region.
Trip End improvements	The improvement to workplace/education sites 'end of trip' facilities in the vicinity of the Connectivity Corridors and Cycleways to encourage active travel
Bus priority measures	This will include bus priority measures at key traffic signal locations to improve journey times.
Smart ticketing via app	This app will enable users to purchase a multi-modal trip ticket and access a region-wide journey planner app
Bus infrastructure and public realm improvements	This scheme is the upgrade or introduction of shelters, Real Time Information (RTI) and accessibility kerbs at locations that complement the Connectivity Corridors
Safer routes to schools	This scheme will aim to improve infrastructure in the vicinity of schools to encourage active travel



greener | healthier | better connected

Appendix C- Proposed Cycle and Sustainable Corridors



SED TCF Package



A range of cycle, walking and bus improvements

- Holdenhurst Road, Bournemouth – Jumpers Common
- Bournemouth town centre – Ferndown
- Poole – Wareham Road, Holton Heath
- Poole – Merley
- Poole – Ferndown and Wimborne
- Merley – Christchurch

Railway
 Road

Urban area
 Other schemes (existing/to be delivered)





greener | healthier | better connected

Appendix D- TCF Governance Structure

