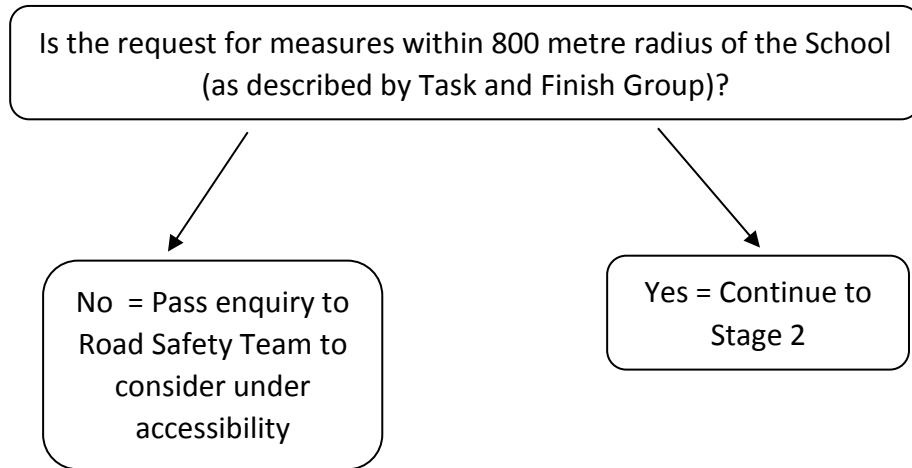


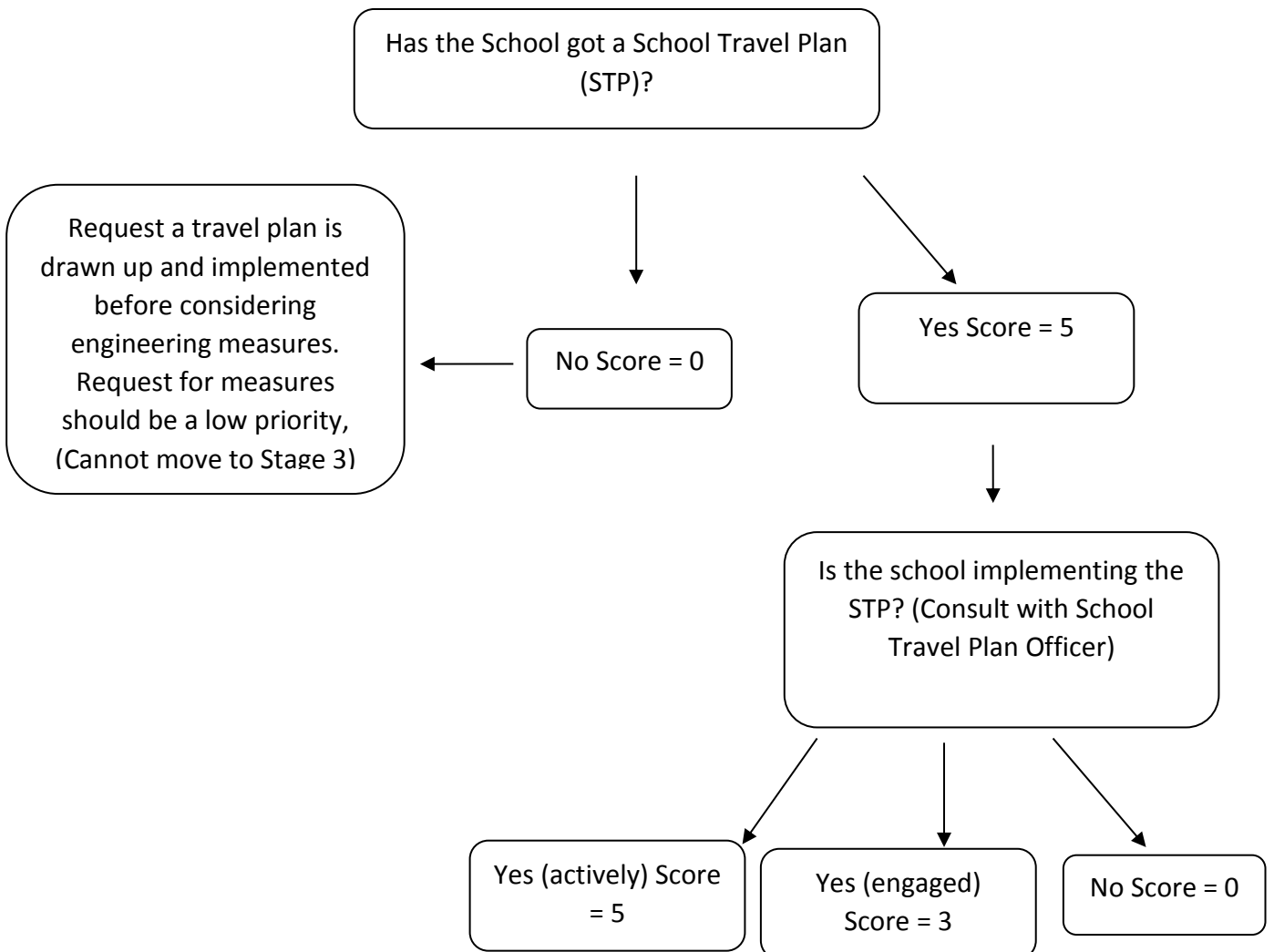
## Appendix C

### Assessment process for SRTS schemes

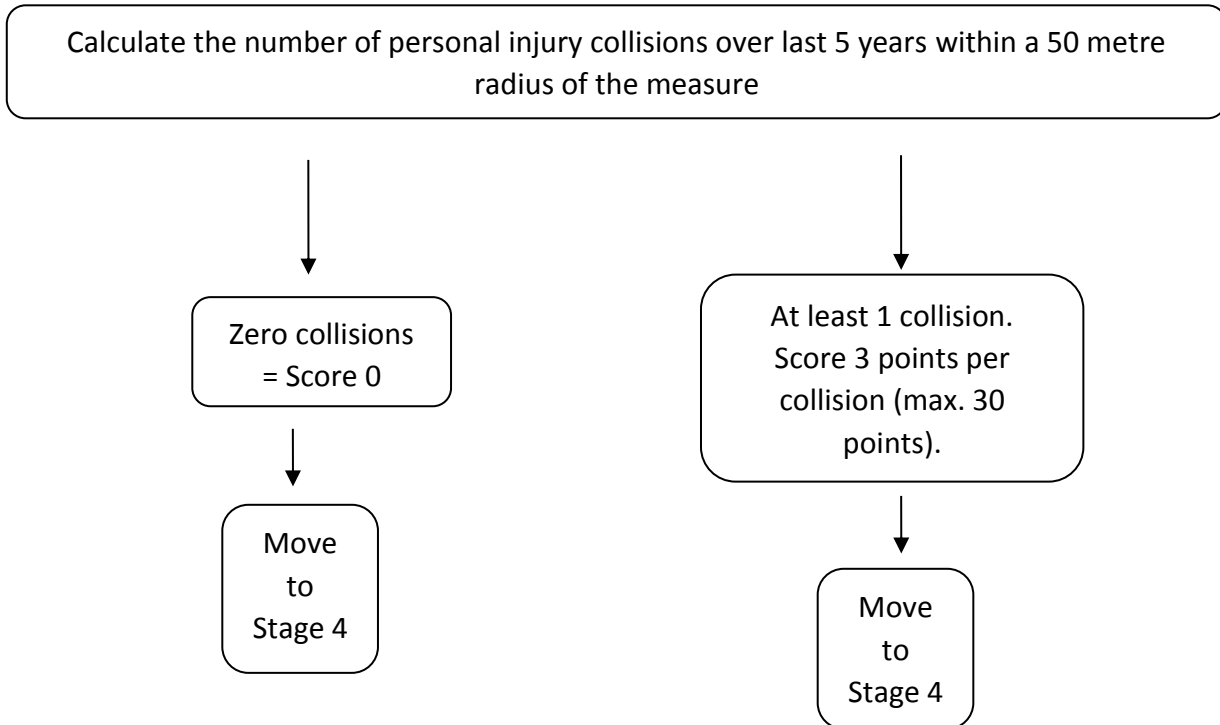
#### Stage 1 – Request Location



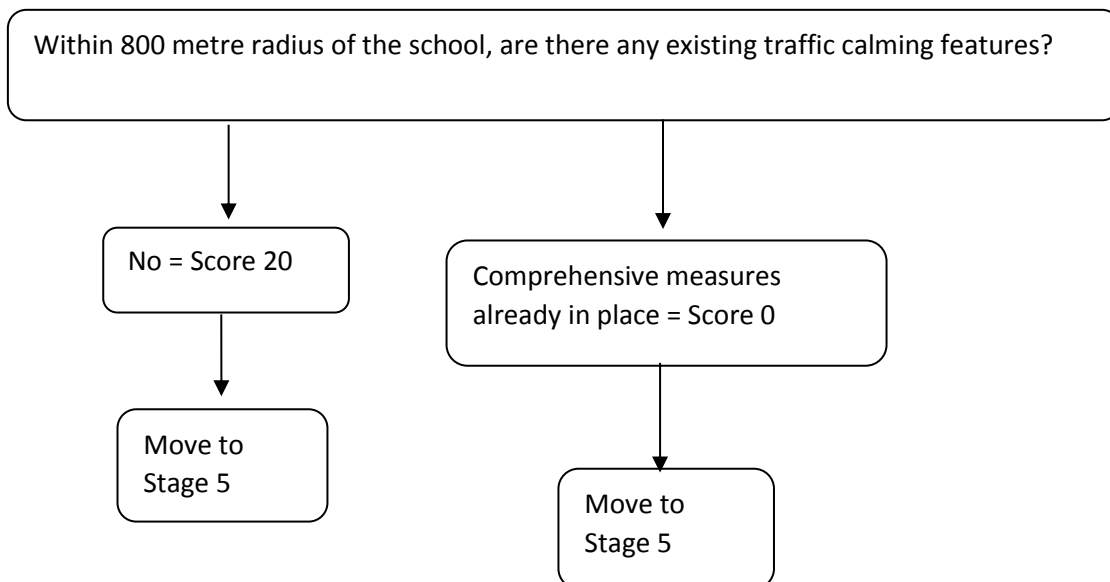
#### Stage 2 – Travel Plan



### Stage 3 – Collisions



### Stage 4 – Existing traffic calming features

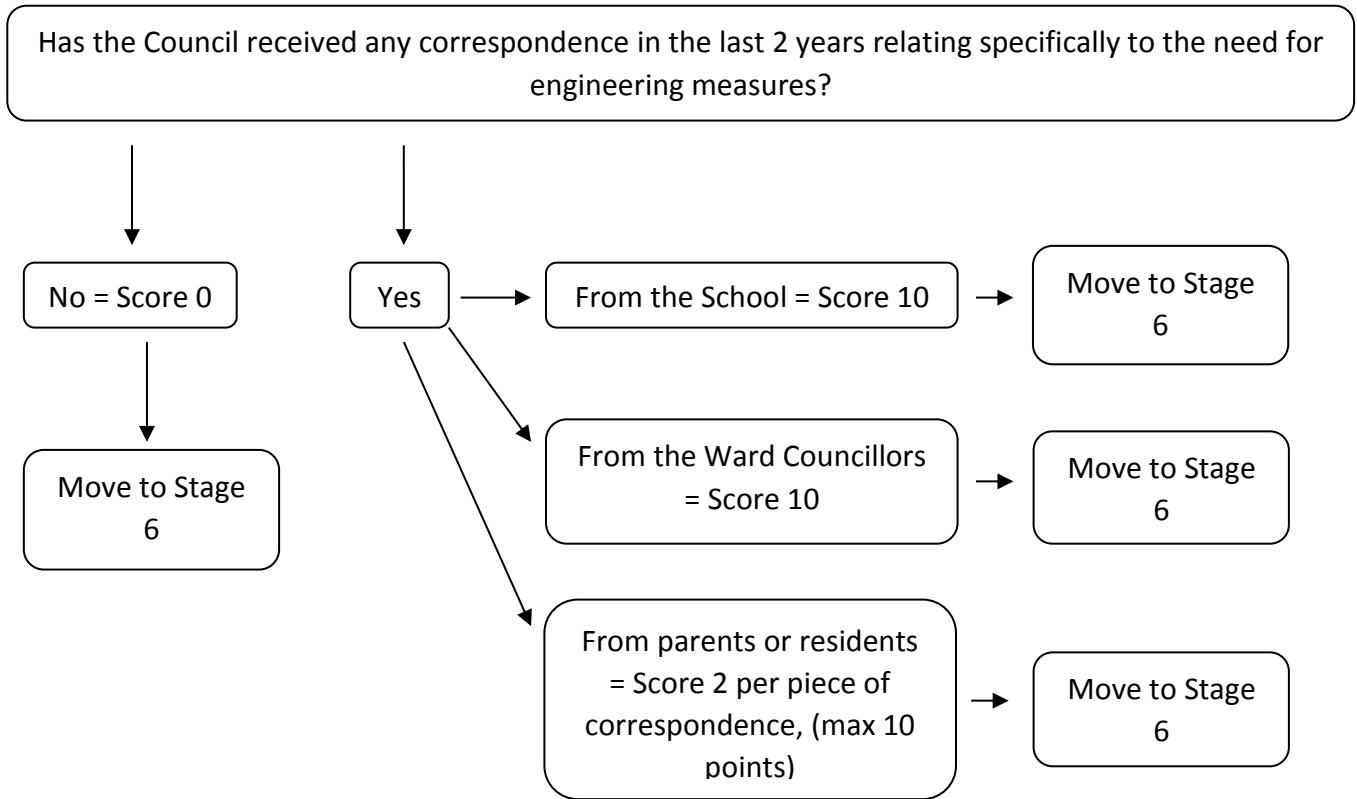


#### **Note**

A score of between 0 and 20 will be allocated according to the actual measures on site.

Consideration should be given to when any scheme went in, and how effective the existing scheme is.

### Stage 5 – Correspondence

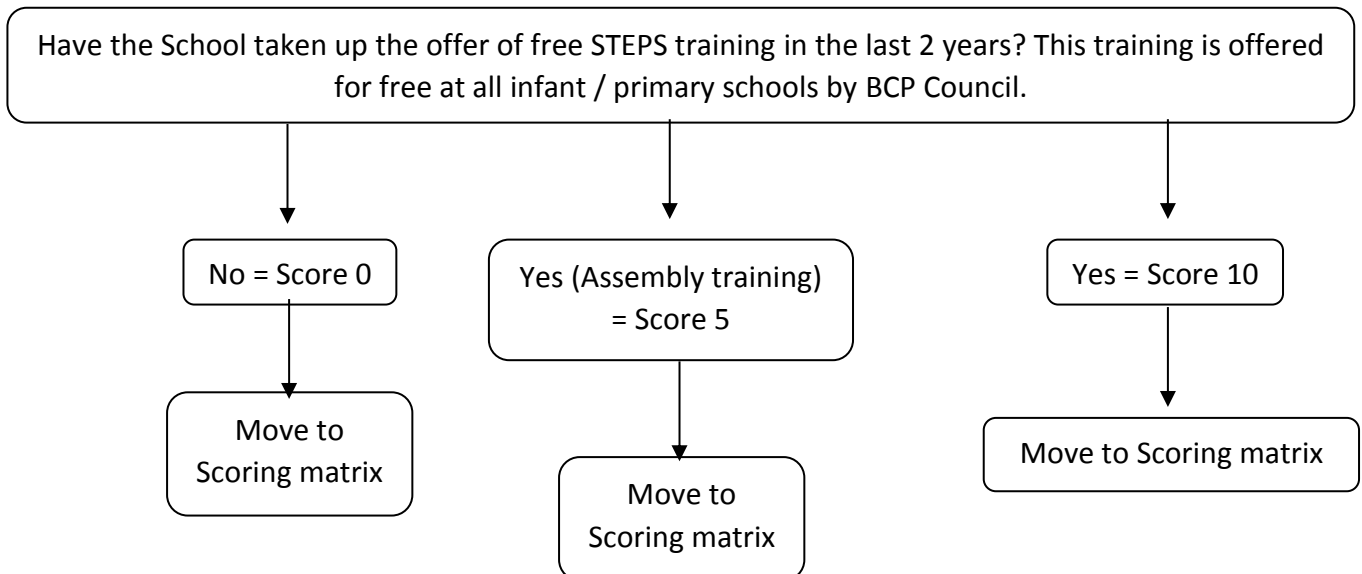


#### Note

There is a maximum of 30 points available for this stage

### Stage 6 – Training

#### Infant and Primary Schools



Have the School taken up the offer of free cycle training through the Bikeability scheme in the last 2 years? This training is offered for free for year 6 (last of primary school) to year 10 pupils by BCP Council.

No = Score 0

Move to Scoring matrix

Yes = Score 10

Move to Scoring matrix

### Stage 7 – Mode of Transport Survey

#### Infant, Primary and All Through Schools

What percentage of pupils travel to school by walking or cycling

Cycling

If 0 – 2 score 2.5  
If 3 – 6 score 5  
If 7 – 10 score 7.5  
If 11 – 13 score 10

Move to Scoring matrix

Walking

If 14 - 32 score 2.5  
If 33 - 51 score 5  
If 52 - 70 score 7.5  
If 71 - 89 score 10

Move to Scoring matrix

**Note:** The percentage will change according to each school and the exact number of children walking or cycling.