

LEGEND

- HOLOGRAPHIC SINGLE FACTOR SMALL SERIES LUMINAIRE MOUNTED ON A GALVANISED 6m STEPPED STEEL COLUMN. 11639.3 DELIVERED LUMENS, 100W, 4000K, IP65, REF: FTS.2.LA124.AY.C7
- HOLOGRAPHIC TWIN FACTOR SMALL SERIES LUMINAIRE MOUNTED ON A GALVANISED 6m STEPPED STEEL COLUMN. 11639.3 DELIVERED LUMENS, 100W, 4000K, IP65, REF: FTS.2.LA124.AY.C7

STATISTICS

DESCRIPTION	AVG	MAX	MIN	MIN/MAX	MIN/AVG
MAIN CAR PARK	28.7 lux	50.4 lux	18.8 lux	0.37	0.66
ACC PARKING	38.4 lux	60.4 lux	25.2 lux	0.42	0.66
MAIN CAR CIRCULATION	44.5 lux	71 lux	18.9 lux	0.27	0.42
DRIVE THROUGH	53 lux	106 lux	29 lux	0.27	0.54
CROSSING 1	56.9 lux	60.5 lux	53.1 lux	0.88	0.93
CROSSING 2	59.5 lux	61.6 lux	57.9 lux	0.97	0.94
CROSSING 3	43.2 lux	51 lux	29 lux	0.57	0.67

ELECTRICAL NOTES

- F1 AND F2 LUMINAIRES TO BE MOUNTED ON A GALVANISED 6m STEPPED STEEL COLUMN.

GENERAL NOTES

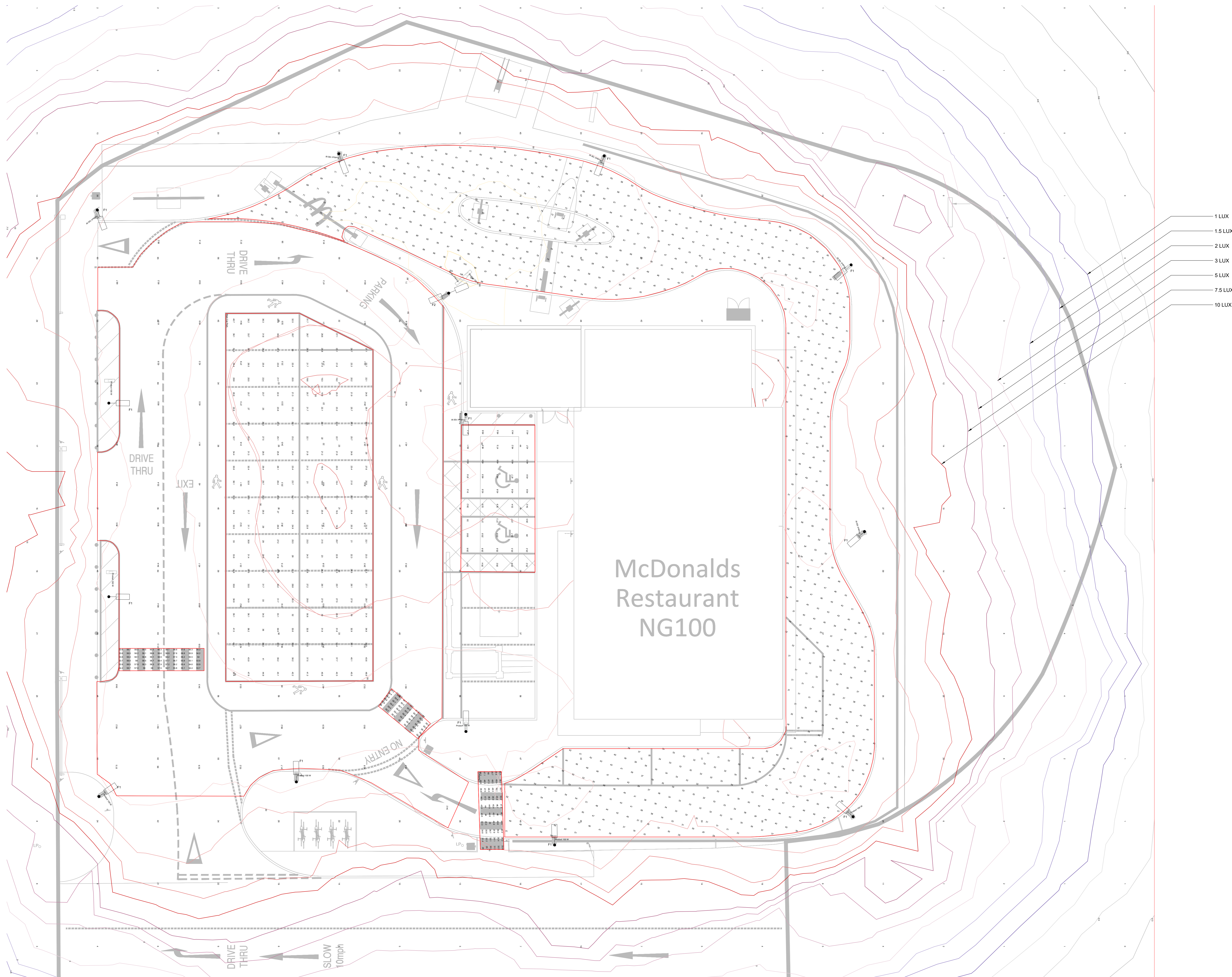
- THIS DRAWING SHALL BE READ IN CONJUNCTION WITH ALL ASSOCIATED SERVICES DRAWINGS, ARCHITECTS AND STRUCTURAL DRAWINGS TOGETHER WITH THE SCHEMATIC DRAWINGS AND ALL MECHANICAL, ELECTRICAL AND OTHER RELEVANT SPECIFICATIONS.
- ALL SERVICES INSTALLATIONS SHALL BE CO-ORDINATED AND FULLY INTEGRATED WITH THE MECHANICAL AND ELECTRICAL SERVICES, ARCHITECTURAL FEATURES, SPECIALIST PLANT AND STRUCTURAL ELEMENTS.
- THE SERVICES CONTRACTORS SHALL FAMILIARISE THEMSELVES WITH THE MECHANICAL AND ELECTRICAL SERVICES, ARCHITECTURAL FEATURES, SPECIALIST PLANT AND STRUCTURAL ELEMENTS.

This drawing is the property of DDA Ltd Consultant Engineers. It must not be reproduced in whole or in part, nor the design used without prior written consent. This drawing and associated documents are strictly private and confidential and should not be discussed with anyone other than members of the design team. Do not scale from this drawing.

SAFETY, HEALTH & ENVIRONMENTAL INFORMATION
 Refer to the DDA Ltd project specific risk assessment and design criteria for the M&E services installation. The installing contractor must prepare method statements for the installation works and agree all works in advance with the main contractor.

It is assumed that all works associated with this drawing will be carried out by competent operatives working, where appropriate, to an approved method.

NOTES



- 1 LUX
- 1.5 LUX
- 2 LUX
- 3 LUX
- 5 LUX
- 7.5 LUX
- 10 LUX

McDonalds
Restaurant
NG100

20-01-21	CLIENT COMMENTS INCORPORATED	P.I.
Rev	Description	Eng



David O'Rourke & Associates Ltd
 10th Floor, 10th Floor
 10th Floor, 10th Floor
 10th Floor, 10th Floor
 10th Floor, 10th Floor



Client
 MCDONALDS - CHRISTCHURCH

Drawing Title
 EXTERNAL LIGHTING LAYOUT
 LUX LEVELS

Scale at AS 1:200	Date 20-01-21
Drawn E.MACDONALD	Engineer P.INGHAM
Status COMMENT	Checked
Drawing No 21/3681/EX/AA01	Rev A