

Licensing Team  
 Town Hall Annex  
 St Stephen's Road  
 Bournemouth BH2 6EA



## Premises Licence Part A

Premises licence number: BH082464

<b>Postal address of premises, or if none, ordnance survey map reference or description:</b>	
Aldi Stores Limited 257-263 Holdenhurst Road	
<b>Post town:</b> Bournemouth	<b>Post Code:</b> BH8 8BZ
<b>Telephone number:</b> 01827 710800	

<b>Licensable activities authorised by the licence:</b>
Supply of Alcohol

<b>The times the licence authorises the carrying out of licensable activities:</b>
<b>Supply of Alcohol</b> Monday - 08:00 to 23:00 Tuesday - 08:00 to 23:00 Wednesday - 08:00 to 23:00 Thursday - 08:00 to 23:00 Friday - 08:00 to 23:00 Saturday - 08:00 to 23:00 Sunday - 10:00 to 22:30 <u>Non-standard timings for the supply of alcohol.</u> Christmas day – 12:00 to 15:00 and 19:00 to 22:30 Good Friday - 08:00 to 22:30

<b>Where the licence authorises supplies of alcohol whether these are on and/ or off supplies:</b>
Alcohol will be consumed off the premises.

**Part 2**

**Name, (registered) address, telephone number and email (where relevant) of holder of premises licence:**

Aldi Stores Limited  
Holly Lane  
Atherstone  
Warwickshire  
CV9 2SQ  
Tel: 01793 836202  
Email: invoices.swi@aldi.co.uk

**Registered number of holder, for example company number, charity number (where applicable):**

2321869

**Name, address and telephone number of designated premises supervisor where the premises licence authorises the supply of alcohol:**

Ms Hannah Sarnowski-Chirek  
[REDACTED]  
[REDACTED]  
[REDACTED]

**Personal licence number and issuing authority of personal licence held by designated premises supervisor where the premises licence authorises for the supply of alcohol:**

[REDACTED]  
[REDACTED]

## Annex 1 – Mandatory conditions

### Mandatory Conditions (Sections 19,20,21 LA 2003)

- 1.1. There shall be no sale or supply of alcohol when there is no designated premises supervisor in respect of this premises licence or at a time when the said premises supervisor does not hold a personal licence or when his/her licence is suspended.
- 1.2. Every supply of alcohol under the premises licence must be made or authorised by a person who holds a personal licence.

### The Licensing Act 2003 (Mandatory Licensing Conditions) (Amendment) Order 2014

#### 1.3.

1. The premises licence holder or club premises certificate holder must ensure that an age verification policy is adopted in respect of the premises in relation to the sale or supply of alcohol.
2. The designated premises supervisor in relation to the premises licence must ensure that the supply of alcohol at the premises is carried on in accordance with the age verification policy.
3. The policy must require individuals who appear to the responsible person to be under 18 years of age (or such older age as may be specified in the policy) to produce on request, before being served alcohol, identification bearing their photograph, date of birth and either -
  - (a) a holographic mark, or
  - (b) an ultraviolet feature.

### The Licensing Act 2003 (Mandatory Conditions) Order 2014

#### 1.4.

1. A relevant person shall ensure that no alcohol is sold or supplied for consumption on or off the premises for a price which is less than the permitted price.
2. For the purposes of the condition set out in paragraph 1 -
  - (a) “duty” is to be construed in accordance with the Alcoholic Liquor Duties Act 1979;
  - (b) “permitted price” is the price found by applying the formula —

$$P = D + (D \times V)$$

Where –

- (i) P is the permitted price,
- (ii) D is the amount of duty chargeable in relation to the alcohol as if the duty were charged on the date of the sale or supply of the alcohol, and
- (iii) V is the rate of value added tax chargeable in relation to the alcohol as if the value added tax were charged on the date of the sale or supply of the alcohol;
- (c) “relevant person” means, in relation to premises in respect of which there is in force a premises licence -
  - (i) the holder of the premises licence,

- (ii) the designated premises supervisor (if any) in respect of such a licence, or
  - (iii) the personal licence holder who makes or authorises a supply of alcohol under such a licence;
  - (d) “relevant person” means, in relation to premises in respect of which there is in force a club premises certificate, any member or officer of the club present on the premises in a capacity which enables the member or officer to prevent the supply in question; and
  - (e) “value added tax” means value added tax charged in accordance with the Value Added Tax Act 1994.
3. Where the permitted price given by Paragraph (b) of paragraph 2 would (apart from this paragraph) not be a whole number of pennies, the price given by that sub-paragraph shall be taken to be the price actually given by that sub-paragraph rounded up to the nearest penny.
4. (1) Sub-paragraph (2) applies where the permitted price given by Paragraph (b) of paragraph 2 on a day (“the first day”) would be different from the permitted price on the next day (“the second day”) as a result of a change to the rate of duty or value added tax.
- (2) The permitted price which would apply on the first day applies to sales or supplies of alcohol which take place before the expiry of the period of 14 days beginning on the second day.

Mandatory Conditions – (Embedded Restrictions) – Attached as part of Conversion Application under Transitional Grandfather Rights Off Licences

- 1.5 Alcohol shall not be sold in an open container or be consumed in the licensed premises.
- 1.6 The abovementioned restrictions on the times permitted to sell alcohol do not prohibit the sale of alcohol to a trader or club for the purposes of the trade or club.
- 1.7 The abovementioned restrictions on the times permitted to sell alcohol do not prohibit the ordering of alcohol to be consumed off the premises, or the despatch by the vendor of the alcohol so ordered.
- 1.8 The abovementioned restrictions on the times permitted to sell alcohol do not prohibit the sale or supply of alcohol to any canteen or mess, being a canteen in which the sale or supply of alcohol is carried out under the authority of the Secretary of State or an authorised mess of members of Her Majesty’s naval, military or air forces.
- 1.9 The licensee shall have regard and comply with any relevant provisions of the following enactments during any licensable activities taking place on the premises :-
- 1.9.1 Children and Young Persons Act 1933
  - 1.9.2 Cinematograph (Safety) Regulations 1955
  - 1.9.3 Sporting Events (Control of Alcohol Etc) Act 1985

**Annex 2 – Conditions consistent with the operating schedule**

N/A

**Annex 3 – Conditions attached after a hearing by the licensing authority**

N/A

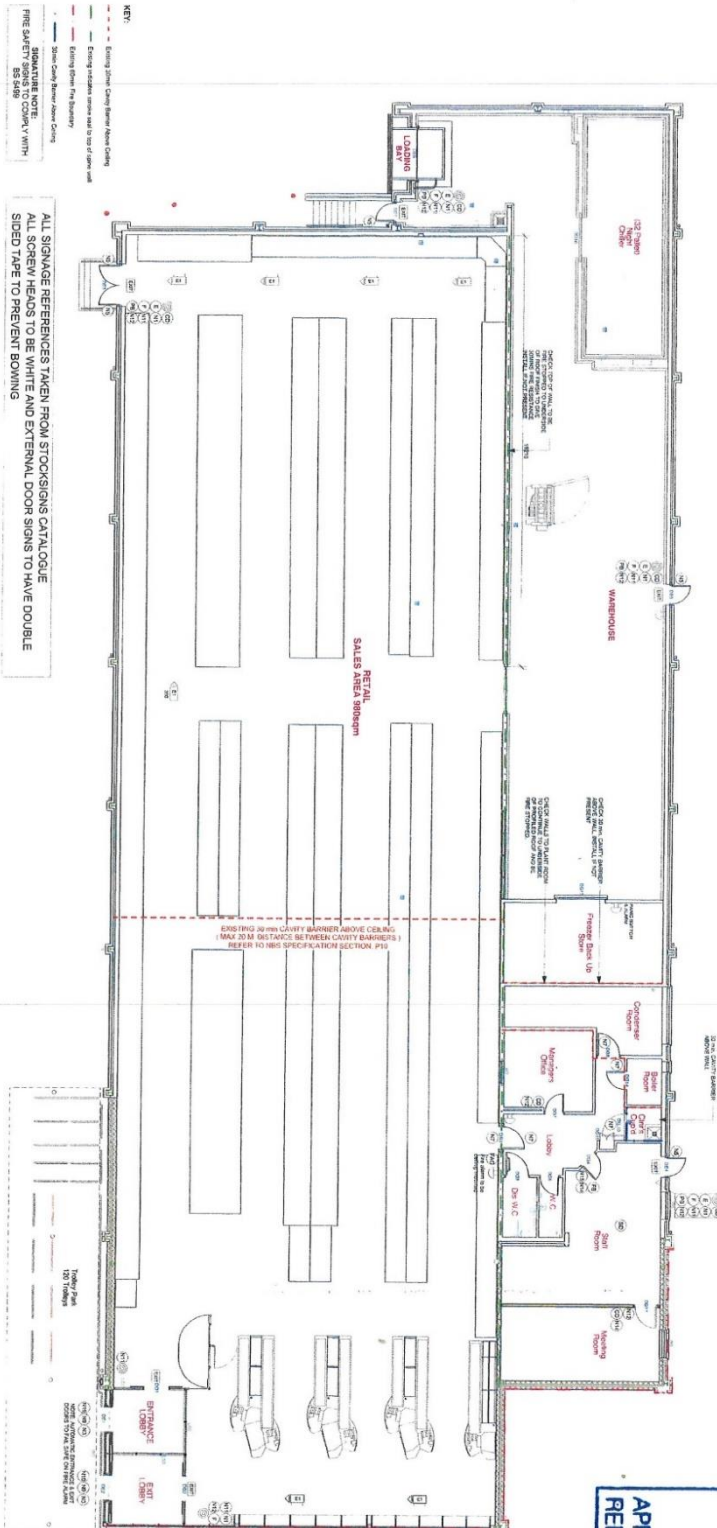
**Annex 4 – Plans**

This licence is issued in accordance with the plan M164485, dated 27 July 2018, as attached.

SCHEDULE OF WORKS MUST BE READ IN CONJUNCTION WITH ARCHITECTURAL DRAWINGS

Scale: 1:100 at A4 sheet size  
20 M

**BOURNEMOUTH BOROUGH COUNCIL**  
LICENSING SECTION  
27 JUL 2019  
**APPROVED**  
REF. No. M/164485



- KEY:**  
Existing Zone, Existing Sign to be removed  
Existing Sign, Existing Sign  
Existing Sign, Existing Sign to be removed  
Existing Sign, Existing Sign  
Existing Sign, Existing Sign  
Existing Sign, Existing Sign
- SIGNATURE NOTE:**  
SIGNAGE TO CONVEY WITH SS 549  
SIGNAGE TO CONVEY WITH SS 548
- ALL SIGNAGE REFERENCES TAKEN FROM STOCKSIGNS CATALOGUE**  
ALL SCREEN HEADS TO BE WHITE AND EXTERNAL DOOR SIGNS TO HAVE DOUBLE SIDED TAPE TO PREVENT BOWING
- 01 GENERAL FIRE NOTICE RW 1011033JK
  - 02 SUPERSONIC EXT. CALL SIGN 450 x 100mm SELF ADHESIVE VINYL BY AUTOMATIC DOOR SUPPLIER
  - 03 TRIPLE CLEAR SIGN 200 x 200mm SELF ADHESIVE VINYL BY AUTOMATIC DOOR SUPPLIER
  - 04 DIRECTIONAL ARROW SIGN WHITE ARROW ON BLUE CIRCLE ON WHITE SQUARE SW 1 200mm
  - 05 TRIPLE EXT. CLEAR SIGN 200 x 200mm MOUNTED EXTERNALLY RW 1011320C
  - 06 TRIPLE DOOR KEEPER SIGN 80 x 200mm RW 101050CC
  - 07 TRIPLE DOOR KEEPER SIGN 130mm x 300mm RW 101170CC
  - 08 FIRE ALARM CALL POINT SIGN BY 100mm SELF ADHESIVE BY AUTOMATIC DOOR SUPPLIER
  - 09 FIRE ALARM CALL POINT SIGN 150 x 200mm RW 101060D5
  - 10 FIRE EXTINGUISHER SIGN 150 x 200mm BY EXTINGUISHER SUPPLIER
  - 11 FIRE EXTINGUISHER SIGN 150 x 200mm SELF ADHESIVE BY EXTINGUISHER SUPPLIER
  - 12 NO SMOKING SIGN SW 1 200mm
  - 13 TRIPLE BLANKET SIGN 75 x 1200mm RW 10120Z8
  - 14 "NO ENTRY" NO ENTRY SELF ADHESIVE VINYL SIGN BY AUTOMATIC DOOR SUPPLIER
  - 15 "NO ENTRY" NO ENTRY SELF ADHESIVE VINYL SIGN BY AUTOMATIC DOOR SUPPLIER
  - 16 TRIPLE ALUM. CONTROL PANEL SIGN 300 x 150mm
  - 17 DIRECTIONAL FIRE EXT. SIGN SW 1 150mm LEFT HAND ALUMINUM RW 1012009G
  - 18 DIRECTIONAL FIRE EXT. SIGN SW 1 150mm LEFT HAND ALUMINUM RW 1012009G
  - 19 DIRECTIONAL FIRE EXT. SIGN SW 1 150mm LEFT HAND ALUMINUM RW 1012009G
  - 20 SUSPENDED DIRECTIONAL FIRE EXT. SIGN SW 1 150mm LEFT HAND ALUMINUM RW 1012009F
  - 21 SUSPENDED DIRECTIONAL FIRE EXT. SIGN SW 1 150mm LEFT HAND ALUMINUM RW 1012009F
  - 22 SUSPENDED DIRECTIONAL FIRE EXT. SIGN SW 1 150mm LEFT HAND ALUMINUM RW 1012009F
  - 23 SUSPENDED DIRECTIONAL FIRE EXT. SIGN SW 1 150mm LEFT HAND ALUMINUM RW 1012009F
  - 24 SUSPENDED DIRECTIONAL FIRE EXT. SIGN SW 1 150mm LEFT HAND ALUMINUM RW 1012009F
  - 25 SUSPENDED DIRECTIONAL FIRE EXT. SIGN SW 1 150mm LEFT HAND ALUMINUM RW 1012009F
  - 26 SUSPENDED DIRECTIONAL FIRE EXT. SIGN SW 1 150mm LEFT HAND ALUMINUM RW 1012009F
  - 27 SUSPENDED DIRECTIONAL FIRE EXT. SIGN SW 1 150mm LEFT HAND ALUMINUM RW 1012009F
  - 28 SUSPENDED DIRECTIONAL FIRE EXT. SIGN SW 1 150mm LEFT HAND ALUMINUM RW 1012009F
  - 29 SUSPENDED DIRECTIONAL FIRE EXT. SIGN SW 1 150mm LEFT HAND ALUMINUM RW 1012009F
  - 30 SUSPENDED DIRECTIONAL FIRE EXT. SIGN SW 1 150mm LEFT HAND ALUMINUM RW 1012009F
  - 31 SUSPENDED DIRECTIONAL FIRE EXT. SIGN SW 1 150mm LEFT HAND ALUMINUM RW 1012009F
  - 32 SUSPENDED DIRECTIONAL FIRE EXT. SIGN SW 1 150mm LEFT HAND ALUMINUM RW 1012009F
  - 33 SUSPENDED DIRECTIONAL FIRE EXT. SIGN SW 1 150mm LEFT HAND ALUMINUM RW 1012009F
  - 34 SUSPENDED DIRECTIONAL FIRE EXT. SIGN SW 1 150mm LEFT HAND ALUMINUM RW 1012009F
  - 35 SUSPENDED DIRECTIONAL FIRE EXT. SIGN SW 1 150mm LEFT HAND ALUMINUM RW 1012009F
  - 36 SUSPENDED DIRECTIONAL FIRE EXT. SIGN SW 1 150mm LEFT HAND ALUMINUM RW 1012009F
  - 37 SUSPENDED DIRECTIONAL FIRE EXT. SIGN SW 1 150mm LEFT HAND ALUMINUM RW 1012009F
  - 38 SUSPENDED DIRECTIONAL FIRE EXT. SIGN SW 1 150mm LEFT HAND ALUMINUM RW 1012009F
  - 39 SUSPENDED DIRECTIONAL FIRE EXT. SIGN SW 1 150mm LEFT HAND ALUMINUM RW 1012009F
  - 40 SUSPENDED DIRECTIONAL FIRE EXT. SIGN SW 1 150mm LEFT HAND ALUMINUM RW 1012009F
  - 41 SUSPENDED DIRECTIONAL FIRE EXT. SIGN SW 1 150mm LEFT HAND ALUMINUM RW 1012009F
  - 42 SUSPENDED DIRECTIONAL FIRE EXT. SIGN SW 1 150mm LEFT HAND ALUMINUM RW 1012009F
  - 43 SUSPENDED DIRECTIONAL FIRE EXT. SIGN SW 1 150mm LEFT HAND ALUMINUM RW 1012009F
  - 44 SUSPENDED DIRECTIONAL FIRE EXT. SIGN SW 1 150mm LEFT HAND ALUMINUM RW 1012009F
  - 45 SUSPENDED DIRECTIONAL FIRE EXT. SIGN SW 1 150mm LEFT HAND ALUMINUM RW 1012009F
  - 46 SUSPENDED DIRECTIONAL FIRE EXT. SIGN SW 1 150mm LEFT HAND ALUMINUM RW 1012009F
  - 47 SUSPENDED DIRECTIONAL FIRE EXT. SIGN SW 1 150mm LEFT HAND ALUMINUM RW 1012009F
  - 48 SUSPENDED DIRECTIONAL FIRE EXT. SIGN SW 1 150mm LEFT HAND ALUMINUM RW 1012009F
  - 49 SUSPENDED DIRECTIONAL FIRE EXT. SIGN SW 1 150mm LEFT HAND ALUMINUM RW 1012009F
  - 50 SUSPENDED DIRECTIONAL FIRE EXT. SIGN SW 1 150mm LEFT HAND ALUMINUM RW 1012009F
  - 51 SUSPENDED DIRECTIONAL FIRE EXT. SIGN SW 1 150mm LEFT HAND ALUMINUM RW 1012009F
  - 52 SUSPENDED DIRECTIONAL FIRE EXT. SIGN SW 1 150mm LEFT HAND ALUMINUM RW 1012009F
  - 53 SUSPENDED DIRECTIONAL FIRE EXT. SIGN SW 1 150mm LEFT HAND ALUMINUM RW 1012009F
  - 54 SUSPENDED DIRECTIONAL FIRE EXT. SIGN SW 1 150mm LEFT HAND ALUMINUM RW 1012009F
  - 55 SUSPENDED DIRECTIONAL FIRE EXT. SIGN SW 1 150mm LEFT HAND ALUMINUM RW 1012009F
  - 56 SUSPENDED DIRECTIONAL FIRE EXT. SIGN SW 1 150mm LEFT HAND ALUMINUM RW 1012009F
  - 57 SUSPENDED DIRECTIONAL FIRE EXT. SIGN SW 1 150mm LEFT HAND ALUMINUM RW 1012009F
  - 58 SUSPENDED DIRECTIONAL FIRE EXT. SIGN SW 1 150mm LEFT HAND ALUMINUM RW 1012009F
  - 59 SUSPENDED DIRECTIONAL FIRE EXT. SIGN SW 1 150mm LEFT HAND ALUMINUM RW 1012009F
  - 60 SUSPENDED DIRECTIONAL FIRE EXT. SIGN SW 1 150mm LEFT HAND ALUMINUM RW 1012009F
  - 61 SUSPENDED DIRECTIONAL FIRE EXT. SIGN SW 1 150mm LEFT HAND ALUMINUM RW 1012009F
  - 62 SUSPENDED DIRECTIONAL FIRE EXT. SIGN SW 1 150mm LEFT HAND ALUMINUM RW 1012009F
  - 63 SUSPENDED DIRECTIONAL FIRE EXT. SIGN SW 1 150mm LEFT HAND ALUMINUM RW 1012009F
  - 64 SUSPENDED DIRECTIONAL FIRE EXT. SIGN SW 1 150mm LEFT HAND ALUMINUM RW 1012009F
  - 65 SUSPENDED DIRECTIONAL FIRE EXT. SIGN SW 1 150mm LEFT HAND ALUMINUM RW 1012009F
  - 66 SUSPENDED DIRECTIONAL FIRE EXT. SIGN SW 1 150mm LEFT HAND ALUMINUM RW 1012009F
  - 67 SUSPENDED DIRECTIONAL FIRE EXT. SIGN SW 1 150mm LEFT HAND ALUMINUM RW 1012009F
  - 68 SUSPENDED DIRECTIONAL FIRE EXT. SIGN SW 1 150mm LEFT HAND ALUMINUM RW 1012009F
  - 69 SUSPENDED DIRECTIONAL FIRE EXT. SIGN SW 1 150mm LEFT HAND ALUMINUM RW 1012009F
  - 70 SUSPENDED DIRECTIONAL FIRE EXT. SIGN SW 1 150mm LEFT HAND ALUMINUM RW 1012009F
  - 71 SUSPENDED DIRECTIONAL FIRE EXT. SIGN SW 1 150mm LEFT HAND ALUMINUM RW 1012009F
  - 72 SUSPENDED DIRECTIONAL FIRE EXT. SIGN SW 1 150mm LEFT HAND ALUMINUM RW 1012009F
  - 73 SUSPENDED DIRECTIONAL FIRE EXT. SIGN SW 1 150mm LEFT HAND ALUMINUM RW 1012009F
  - 74 SUSPENDED DIRECTIONAL FIRE EXT. SIGN SW 1 150mm LEFT HAND ALUMINUM RW 1012009F
  - 75 SUSPENDED DIRECTIONAL FIRE EXT. SIGN SW 1 150mm LEFT HAND ALUMINUM RW 1012009F
  - 76 SUSPENDED DIRECTIONAL FIRE EXT. SIGN SW 1 150mm LEFT HAND ALUMINUM RW 1012009F
  - 77 SUSPENDED DIRECTIONAL FIRE EXT. SIGN SW 1 150mm LEFT HAND ALUMINUM RW 1012009F
  - 78 SUSPENDED DIRECTIONAL FIRE EXT. SIGN SW 1 150mm LEFT HAND ALUMINUM RW 1012009F
  - 79 SUSPENDED DIRECTIONAL FIRE EXT. SIGN SW 1 150mm LEFT HAND ALUMINUM RW 1012009F
  - 80 SUSPENDED DIRECTIONAL FIRE EXT. SIGN SW 1 150mm LEFT HAND ALUMINUM RW 1012009F
  - 81 SUSPENDED DIRECTIONAL FIRE EXT. SIGN SW 1 150mm LEFT HAND ALUMINUM RW 1012009F
  - 82 SUSPENDED DIRECTIONAL FIRE EXT. SIGN SW 1 150mm LEFT HAND ALUMINUM RW 1012009F
  - 83 SUSPENDED DIRECTIONAL FIRE EXT. SIGN SW 1 150mm LEFT HAND ALUMINUM RW 1012009F
  - 84 SUSPENDED DIRECTIONAL FIRE EXT. SIGN SW 1 150mm LEFT HAND ALUMINUM RW 1012009F
  - 85 SUSPENDED DIRECTIONAL FIRE EXT. SIGN SW 1 150mm LEFT HAND ALUMINUM RW 1012009F
  - 86 SUSPENDED DIRECTIONAL FIRE EXT. SIGN SW 1 150mm LEFT HAND ALUMINUM RW 1012009F
  - 87 SUSPENDED DIRECTIONAL FIRE EXT. SIGN SW 1 150mm LEFT HAND ALUMINUM RW 1012009F
  - 88 SUSPENDED DIRECTIONAL FIRE EXT. SIGN SW 1 150mm LEFT HAND ALUMINUM RW 1012009F
  - 89 SUSPENDED DIRECTIONAL FIRE EXT. SIGN SW 1 150mm LEFT HAND ALUMINUM RW 1012009F
  - 90 SUSPENDED DIRECTIONAL FIRE EXT. SIGN SW 1 150mm LEFT HAND ALUMINUM RW 1012009F
  - 91 SUSPENDED DIRECTIONAL FIRE EXT. SIGN SW 1 150mm LEFT HAND ALUMINUM RW 1012009F
  - 92 SUSPENDED DIRECTIONAL FIRE EXT. SIGN SW 1 150mm LEFT HAND ALUMINUM RW 1012009F
  - 93 SUSPENDED DIRECTIONAL FIRE EXT. SIGN SW 1 150mm LEFT HAND ALUMINUM RW 1012009F
  - 94 SUSPENDED DIRECTIONAL FIRE EXT. SIGN SW 1 150mm LEFT HAND ALUMINUM RW 1012009F
  - 95 SUSPENDED DIRECTIONAL FIRE EXT. SIGN SW 1 150mm LEFT HAND ALUMINUM RW 1012009F
  - 96 SUSPENDED DIRECTIONAL FIRE EXT. SIGN SW 1 150mm LEFT HAND ALUMINUM RW 1012009F
  - 97 SUSPENDED DIRECTIONAL FIRE EXT. SIGN SW 1 150mm LEFT HAND ALUMINUM RW 1012009F
  - 98 SUSPENDED DIRECTIONAL FIRE EXT. SIGN SW 1 150mm LEFT HAND ALUMINUM RW 1012009F
  - 99 SUSPENDED DIRECTIONAL FIRE EXT. SIGN SW 1 150mm LEFT HAND ALUMINUM RW 1012009F
  - 100 SUSPENDED DIRECTIONAL FIRE EXT. SIGN SW 1 150mm LEFT HAND ALUMINUM RW 1012009F



Kendall Kingscott  
10000 Dan Bannister Rd  
Hoddeston Rd - Finest Store  
ALDI Stores Ltd  
01474 634000  
www.aldi.co.uk

Approved Fire Risk  
170676 W207 - A  
Date: 15/07/2019

Licensing Team  
Town Hall Annex  
St Stephen's Road  
Bournemouth BH2 6EA



## Premises Licence Part B

Premises licence number: BH082464

**Postal address of premises, or if none, ordnance survey map reference or description:**

Aldi Stores Limited 257-263 Holdenhurst Road

**Post town:** Bournemouth

**Post Code:** BH8 8BZ

**Telephone number:** 01827 710800

**Licensable activities authorised by the licence:**

Supply of Alcohol

**The times the licence authorises the carrying out of licensable activities:**

**Supply of Alcohol:** Monday to Saturday - 08:00 to 23:00, Sunday - 10:00 to 22:30

Non-standard timings for the supply of alcohol.

Christmas day - 12:00 to 15:00 and 19:00 to 22:30

Good Friday - 08:00 to 22:30

**Where the licence authorises supplies of alcohol whether these are on and/ or off supplies:**

Alcohol will be consumed off the premises.

**Name, (registered) address, telephone number and email (where relevant) of holder of premises licence:**

Aldi Stores Limited, Holly Lane, Atherstone, Warwickshire, CV9 2SQ, Tel: 01793 836202,

Email: invoices.swi@aldi.co.uk

**Registered number of holder, for example company number, charity number (where applicable):**

2321869

**Name of designated premises supervisor where the premises licence authorises the supply of alcohol:**

Ms Hannah Sarnowski-Chirek

**State whether access to the premises by children is restricted or prohibited:**

N/A

**Issued: 24 November 2005**  
**Revised: 30 May 2020 [Vary DPS]**

  
**Mrs Nananka Randle**  
**Licensing Manager**