

## General Risk Assessment



Description of Job/Task being assessed:		School Street Pilot scheme			
Directorate	Regeneration and Economy	Division	Transportation	School	St Michaels CE Primary
Risk Assessor(s)	Beth Barker-Stock	Ref no		Location/Site	Somerville road
In consultation with	Issy Riding	Date	17 <sup>th</sup> December 2021		

What are the hazards?	Who might be harmed and how?	What are you already doing?	What further action is necessary?	Action by who?	Action by when?	Done
Moving vehicles and cyclists	Injury to volunteers when setting up/ taking down the road closure, or to children when using the street.  After the barriers are removed, children don't realise the closure has finished and run out into the re-opened street.		Road closure points to be clearly marked with appropriate signage setting out the restrictions.	RW	Start	
			Parents to be clearly informed they are responsible for children's safety and behaviour at all times.	IR/AS	Start and ongoing	
			All stewards to be trained and briefed by a person experienced in this kind of activity.	IR	Start and when new stewards join	
			All volunteers to wear hi vis vests.	IR	Ongoing	
			Volunteers to check the road is clear before installing the road closure.	IR	Before each closure	
			Road closure point to be considered carefully to ensure good visibility for drivers. Measures subject to a Road Safety Assessment.	RW/BBS	Start	

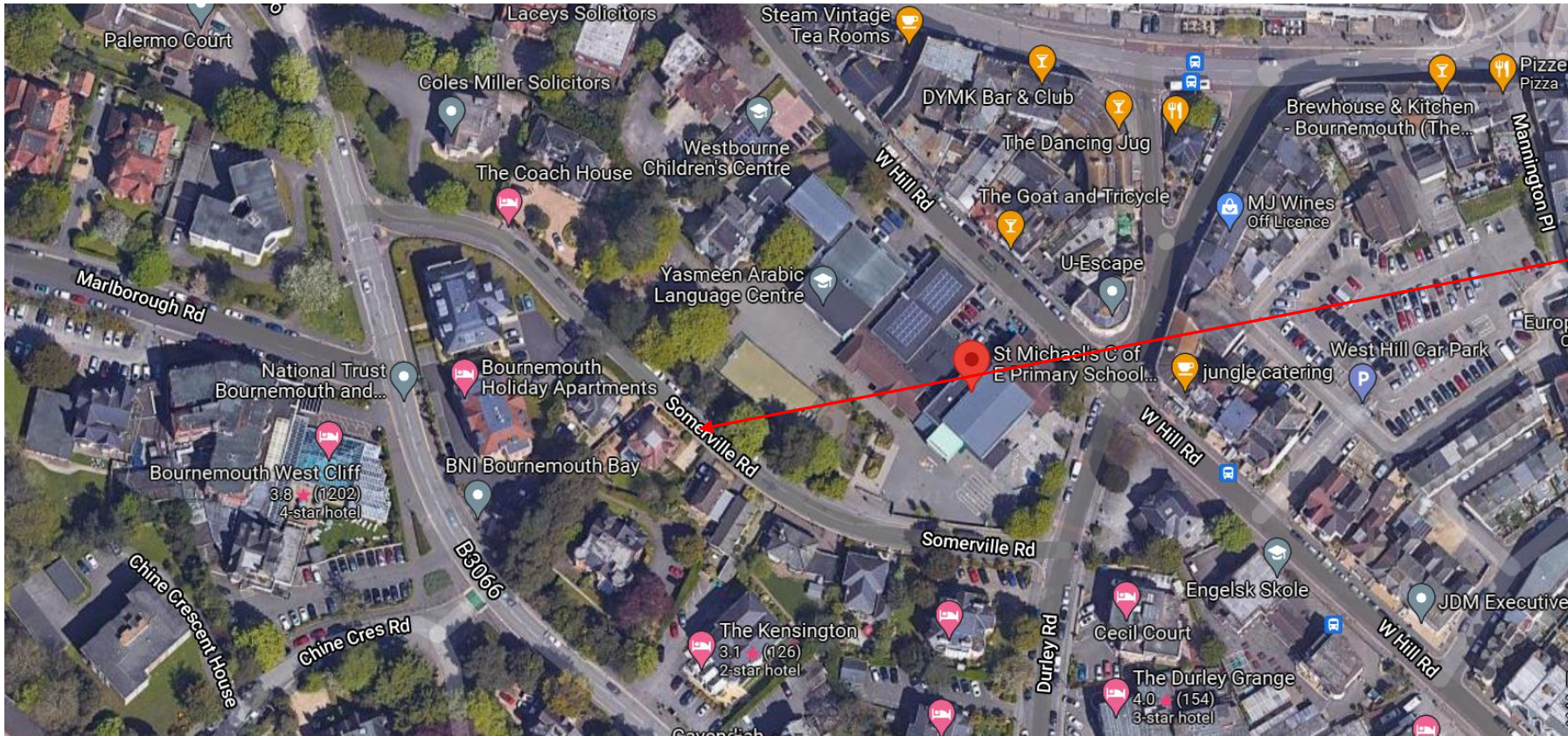
What are the hazards?	Who might be harmed and how?	What are you already doing?	What further action is necessary?	Action by who?	Action by when?	Done
			Road closure notices and door to door leafleting prior to event to warn neighbours and the school community in advance of the road closure.	EC/IR	Start	
			Children to be asked to stay out of the road until ALL road closure points in place.	IR	Before each closure	
			Volunteers to alert each other using walkie-talkies and ensure there are no children in the road if a vehicle needs to pass through the road closure, before removing the barrier.	IR	Ongoing	
			Cars passing through the barrier to access their property to be directed/led by a steward and to drive at walking pace.	IR	Ongoing	
			At the end of the closure period, stewards to alert anyone left in the road, and walk the length of the road to ensure that any remaining children are clear and aware that the road is re-opened to traffic.	IR	At end of each closure	
Children going beyond the barriers	Injury or loss of child		Ensure parents know that they are responsible at all times for their children during the closure.	IR/AS	Start and ongoing	
			Stewards with walkie-talkies to stay at the barriers throughout the event.	IR	Ongoing	
Passing members of the public	Collision with children scooting or cycling		Signage and visibility of stewards in high vis will alert people that there is new event going on – they can ask about it if they wish	IR	Start and ongoing	
			Ensure parents know that they are responsible for their children during the	IR/AS	Start and	

What are the hazards?	Who might be harmed and how?	What are you already doing?	What further action is necessary?	Action by who?	Action by when?	Done
			event		ongoing	
			Bike It officers will be working with the children in advance of the School Street starting, teaching scooter/cycle skills and etiquette.	AS	Start and ongoing	
Aggressive/upset drivers	Volunteers or residents being subject to abuse or injury from drivers trying to get in and out of the street	Road is an existing one-way street, so traffic is only travelling through in one direction.	Prior notice of the event is given to local residents (including opportunity for any objections/concerns to be considered by the council)	BBS	Start	
			Stewards are trained in advance, including in dealing with confrontation. They will lead cars in and out at walking pace	IR	Start and ongoing	
			Ask children to say thank you, smile and wave at the drivers as they pass	IR/AS	Start and ongoing	
Rain / Heat / Ice	Children, parents and volunteers could be affected negatively by extreme weather  Possibility of slips, trips, collisions increased with ice		Ensure parents know that they are responsible for their children during the event	IR/AS		
			If the weather is extreme, the lead steward is to make a call in liaison with the school as to whether the School Street should go ahead.	IR/Head	As required	
Any street-specific issues?	Solicitors' firm at the top of Somerville Road have the exit from their car park	Have engaged with the firm.	The car park exit is very close to the closure point, therefore stewards will be able to speak to any driver leaving the car park, and direct accordingly.	IR		



What are the hazards?	Who might be harmed and how?	What are you already doing?	What further action is necessary?	Action by who?	Action by when?	Done
	onto Somerville Road  Existing street parking	Road has double yellow lines apart from parking bay with 1 hr no return and disabled.	Parking cannot be accessed during the closure period, except for by Blue Badge holders.	IR		
Headteacher (print/sign):		Date		Next Review Date		

School Street - Somerville road



School street