

LEGEND

- Existing trees to be retained
- Note: Existing car park surfacing to be retained with localised repairs/making good as required
- Proposed asphalt surfacing to circulation areas
- Proposed line markings to create pattern and interest to circulation areas
- Proposed colour asphalt surfacing to circulation areas within secure line
- Proposed permeable surround to trees in paving, with flush trim
- Proposed supporter dedication paving, exact layout and extents to be confirmed
- Proposed feature bands within paved areas to form part of supporter dedications
- Proposed concrete block paving to denote hire bike parking area extents
- Proposed seating unit
- Proposed HVM seating unit, subject to specialist input
- Proposed HVM bollard, subject to specialist input
- Proposed 'Sheffield' stand cycle parking
- Proposed artwork to public realm - to be steel panels with laser cut/punched images
- Proposed trees (refer to planting plans for details)
- Proposed areas for planting (refer to planting plans for details)
- Proposed areas of green roof
- Proposed areas of seeding (refer to planting plans for details)
- Existing and proposed hedges (refer to planting plans for details)

Rev.	Date	Note	By
F	15/04/26	Layout updated	RA
E	14/04/26	Layout updated	RA
D	26/03/26	Layout updated	RA
C	12/01/26	Layout updated	RA

AFC Bournemouth

on behalf of
AFC Bournemouth

**LA304
Main Works Landscape
Proposals - Sheet 1 of 2**

Drawn by RA	Checked by RA	Scale 1:500@A1
Drawn on 21.10.25	Revision F	Job 708720

REFER TO DRAWING LA304 FOR CONTINUATION

South Stand
REFER TO DRAWING LA304 FOR CONTINUATION



LEGEND

- Existing trees to be retained
- Proposed asphalt surfacing to circulation areas
- Proposed line markings to create pattern and interest to circulation areas
- Proposed colour asphalt surfacing to circulation areas within secure line
- Proposed permeable surround to trees in paving, with flush trim
- Proposed supporter dedication paving, exact layout and extents to be confirmed
- Proposed feature bands within paved areas to form part of supporter dedications
- Proposed concrete block paving to denote hire bike parking area extents
- Proposed seating unit
- Proposed HVM seating unit, subject to specialist input
- Proposed HVM bollard, subject to specialist input
- Proposed 'Sheffield' stand cycle parking
- Proposed artwork to public realm - to be steel panels with laser cut/punched images
- Proposed trees (refer to planting plans for details)
- Proposed areas for planting (refer to planting plans for details)
- Proposed areas of green roof
- Proposed areas of seeding (refer to planting plans for details)
- Existing and proposed hedges (refer to planting plans for details)

Note: Existing car park surfacing to be retained with localised repairs/making good as required

Rev.	Date	Note	By
F	15/04/26	Layout updated	RA
E	14/04/26	Layout updated	RA
D	26/03/26	Layout updated	RA
C	12/01/26	Layout updated	RA

AFC Bournemouth

on behalf of
 AFC Bournemouth

**LA305
 Main Works Landscape
 Proposals - Sheet 2 of 2**

Drawn by RA	Checked by RA	Scale 1:500@A1
Drawn on 21.10.25	Revision F	Job 708720



Reproduced from the Ordnance Survey Map with the permission of the Controller of H.M. Stationery Office Crown copyright/licence number 100024244 Savills (UK) Ltd. Copyright Savills (UK) Ltd.

Planting Notes

General Requirements
 Planting to be undertaken into existing in-situ topsoil.
 Plants to conform to the National Plant Specification. All plant stock to originate from within the UK. Plant handling and planting operations to be in accordance with HTA 'Handling and Establishing Landscape Plants', Parts III. Existing trees to be protected with fencing as specified by the Arboriculturalist.

Utilities
 The contractor is responsible for determining the exact location of services before commencing work.
 Contractor to note presence of overhead cables as required and take suitable precautions.

Tree Planting
 Trees shown on plan to be planted with species as indicated or alternative agreed prior to ordering. Clear surface vegetation prior to excavating tree pits, pits to be nom. 1.0x1.0x0.9m depth, excavated material to be set aside for backfilling. Sides of pits to be 'roughened' to avoid 'smearing' and base broken up to aid free drainage. Pits to be backfilled with clean washed sharp sand to a depth of 0.45m and trees to be planted at nursery depth with plastic irrigation/aeration pipe around rootball, with inlet and cap, pits to be backfilled with excavated material. All trees to be secured via 2no. short timber stakes and secured to the tree trunk via bio-degradable jute ties, knotted to form a spacer. Suitable rabbit protection to be formed using 3-4 timber posts with suitable wire mesh secured to posts with full ground contact.
 All trees to be watered in and surface mulched to 50mm depth with bark mulch chips around base of tree. Planting to be carried out late October to late March, during suitable weather conditions, avoiding days with frost or strong, drying winds.

Hedge planting
 The roots of bare-root plants must be kept covered at all times, to prevent them drying out. Keep bare-root plants completely within a polythene sack until the moment of planting.
 Transplants to be notch planted or pit planted depending on soil conditions and size of roots, each with 30g 'Sierrablend Flora' slow release fertiliser, or equivalent. Ensure notch is large enough to accommodate roots without bending or breaking. Plant at the same depth transplant was grown at in the nursery. Container grown plants to be planted into pits suitable to accommodate the full spread of roots.
 All plants to be fitted with Tubex, or equivalent, biodegradable tree or shrub shelters according to species, securely staked and with full ground contact, or fencing to planted area.
 All plants to be watered in and surface mulched to 50mm depth with bark mulch chips around tubex shelter. Planting to be carried out late October to late March, during suitable weather conditions, avoiding days with frost or strong, drying winds.

Maintenance
 To ensure good establishment of planting, maintenance should be undertaken for 5 years from Practical Completion (first year to be carried out by the installing contractor). Weed control, watering and replacement of failures in the next planting season.

PLANTING SCHEDULE - FULL WORKS

Number	Native trees	Botanical name	Common name	Form	Girth	Min. supply size (cm)	Transplanted	Pot size	Root condition
32	Acer campestre	Field Maple	EHS	14-16cm girth	350	N/A	N/A	Rootball	
8	Carpinus betulus	Hornbeam	EHS	14-16cm girth	350	N/A	N/A	Rootball	
14	Crataegus monogyna	Midland Hawthorn	EHS	14-16cm girth	350	N/A	N/A	Rootball	
3	Malus sylvestris	Crab Apple	EHS	14-16cm girth	350	N/A	N/A	Rootball	
7	Liquidambar styraciflua	Sweet Gum	EHS	14-16cm girth	350	N/A	N/A	Rootball	
18	Pinus sylvestris	Scots Pine	EHS	14-16cm girth	350	N/A	N/A	Rootball	
8	Prunus Accolade	Accolade Cherry	EHS	14-16cm girth	350	N/A	N/A	Rootball	
12	Prunus avium	Wild cherry	EHS	14-16cm girth	350	N/A	N/A	Rootball	
2	Prunus padus	Bird cherry	EHS	14-16cm girth	350	N/A	N/A	Rootball	
8	Quercus robur	English Oak	EHS	14-16cm girth	350	N/A	N/A	Rootball	
8	Sorbus aucuparia	Rowan	EHS	14-16cm girth	350	N/A	N/A	Rootball	
8	Tilia cordata	Small Leaved Lime	EHS	14-16cm girth	350	N/A	N/A	Rootball	
6	Pyrus calleryana 'Chanticleer'	Callery Pear	EHS	14-16cm girth	350	N/A	N/A	Rootball	
134									

Number	Native hedge	Botanical name	Common name	Form	Min. supply size (cm)	Transplanted	% mix	Root condition
96	Acer campestre	Field Maple	Whip	60-80	1+1	20	Bare Root	
120	Crataegus monogyna	Midland Hawthorn	Whip	60-80	1+1	25	Bare Root	
66	Corylus avellana	Hazel	Whip	60-80	1+1	15	Bare Root	
96	Cornus sanguinea	Dogwood	Whip	60-80	1+1	20	Bare Root	
96	Euonymus europaeus	Spindle	Whip	60-80	1+1	20	Bare Root	
66	Prunus spinosa	Blackthorn	Whip	60-80	1+1	15	Bare Root	
60	Viburnum opulus	Gelder Rose	Whip	60-80	1+1	10	Bare Root	

Planted in double staggered row at 45cm centres

Number	Beech hedge	Botanical name	Common name	Form	Min. supply size (cm)	Transplanted	% mix	Root condition
6	Fagus sylvatica	Beech	Whip	60-80	1+1	100	Bare Root	

Planted in double staggered row at 45cm centres

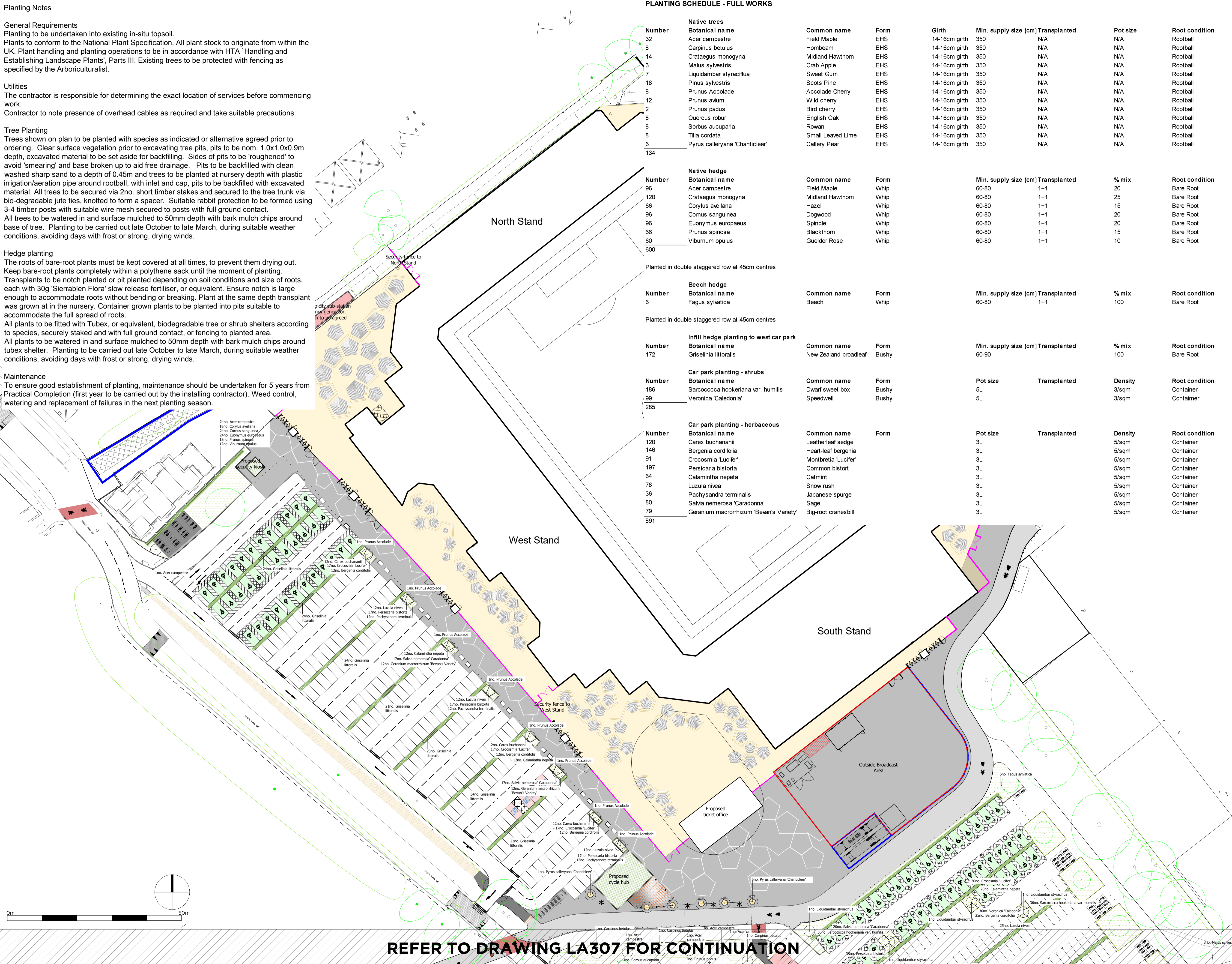
Number	Infill hedge planting to west car park	Botanical name	Common name	Form	Min. supply size (cm)	Transplanted	% mix	Root condition
172	Griselinia littoralis	New Zealand broadleaf	Bushy	60-90		100	Bare Root	

Number	Car park planting - shrubs	Botanical name	Common name	Form	Pot size	Transplanted	Density	Root condition
186	Sarcococca hookeriana var. humilis	Dwarf sweet box	Bushy	5L	3/sqm	Container		
99	Veronica 'Caledonia'	Speedwell	Bushy	5L	3/sqm	Container		
285								

Number	Car park planting - herbaceous	Botanical name	Common name	Form	Pot size	Transplanted	Density	Root condition
120	Carex buchananii	Leatherleaf sedge		3L	5/sqm	Container		
146	Bergenia cordifolia	Heart-leaf bergenia		3L	5/sqm	Container		
91	Crococsmia 'Lucifer'	Montbretia 'Lucifer'		3L	5/sqm	Container		
197	Persicaria bistorta	Common bistort		3L	5/sqm	Container		
64	Calamintha nepeta	Catmint		3L	5/sqm	Container		
78	Luzula nivea	Snow rush		3L	5/sqm	Container		
36	Pachysandra terminalis	Japanese spurge		3L	5/sqm	Container		
80	Salvia nemerosa 'Caradonna'	Sage		3L	5/sqm	Container		
79	Geranium macrorrhizum 'Bevan's Variety'	Big-root cranesbill		3L	5/sqm	Container		
891								

LEGEND

- Existing trees to be retained
- Proposed trees, refer to schedule for details
- Proposed areas for planting, refer to schedule for details
- Proposed areas of green roof
- Proposed areas of seeding with Emorsgate Mix EMTF Wildflowers for sandy soils (or equivalent) sown at rate of 1.5g/m²
- Existing and proposed hedges, refer to schedule for details



REFER TO DRAWING LA307 FOR CONTINUATION

Rev.	Date	Note	By
G	15/04/26	Layout updated	RA
F	14/04/26	Layout updated	RA
E	26/03/26	Layout updated	RA
D	12/01/26	Cycle hub amended, planting and schedule updated	RA

AFC Bournemouth

on behalf of
 AFC Bournemouth

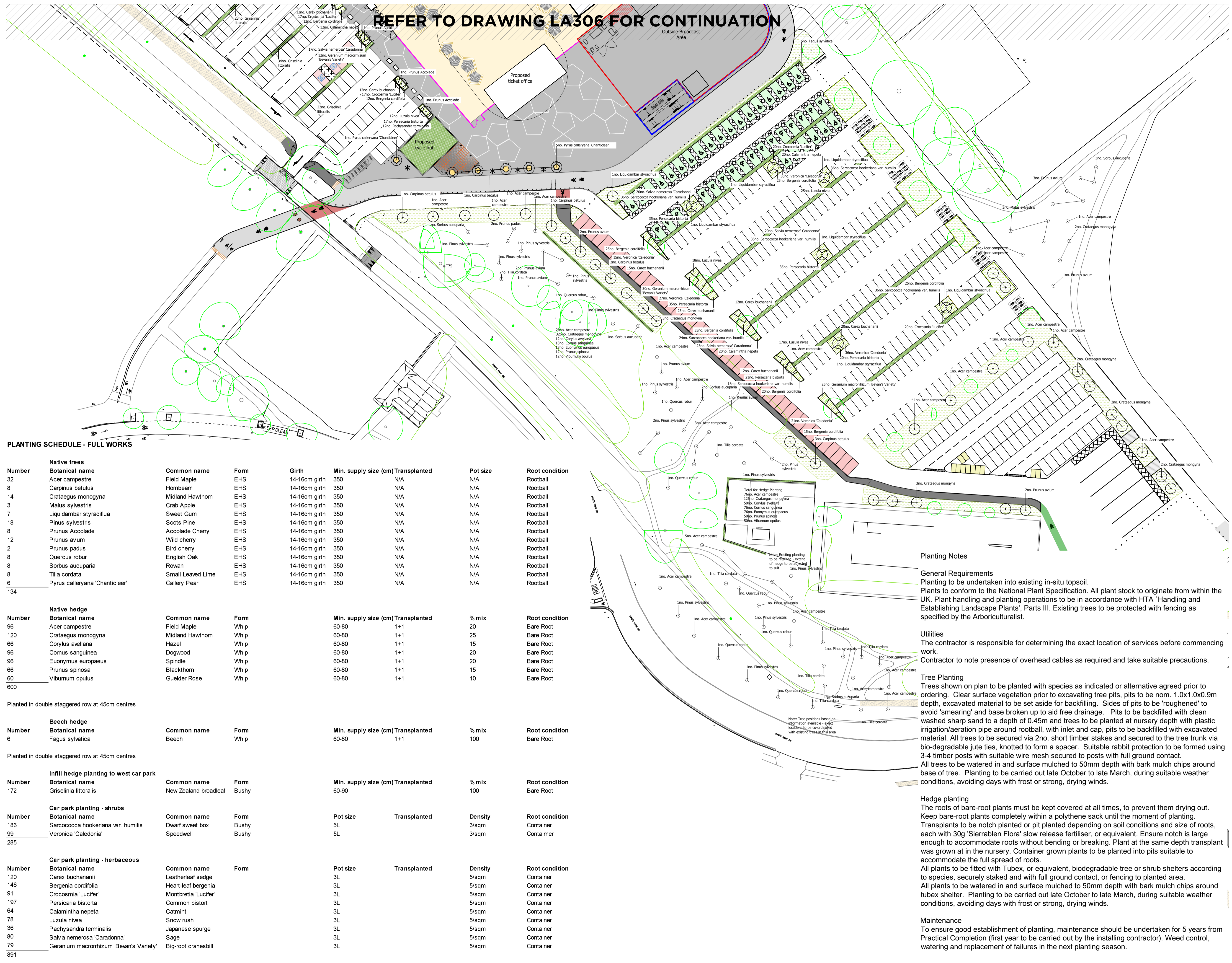
LA306
Main Works Planting Plan - Sheet 1 of 2

Drawn by	Checked by	Scale
RA	RA	1:500@A1
Drawn on	Revision	Job
04.11.25	G	708720



Reproduced from the Ordnance Survey Map with the permission of the Controller of H.M. Stationery Office. Crown copyright/licence number: 100024244. Savills (UK) Ltd. Copyright Savills (UK) Ltd.

REFER TO DRAWING LA306 FOR CONTINUATION



LEGEND

- Existing trees to be retained
- Proposed trees, refer to schedule for details
- Proposed areas for planting, refer to schedule for details
- Proposed areas of green roof
- Proposed areas of seeding with Emorsgate Mix EM7F Wildflowers for sandy soils (or equivalent) sown at rate of 1.5g/m²
- Existing and proposed hedges, refer to schedule for details

PLANTING SCHEDULE - FULL WORKS

Number	Native trees	Botanical name	Common name	Form	Girth	Min. supply size (cm)	Transplanted	Pot size	Root condition
32	Acer campestre	Field Maple	EHS	14-16cm girth	350	N/A	N/A	Rootball	
8	Carpinus betulus	Hornbeam	EHS	14-16cm girth	350	N/A	N/A	Rootball	
14	Crataegus monogyna	Midland Hawthorn	EHS	14-16cm girth	350	N/A	N/A	Rootball	
3	Malus sylvestris	Crab Apple	EHS	14-16cm girth	350	N/A	N/A	Rootball	
7	Liquidambar styraciflua	Sweet Gum	EHS	14-16cm girth	350	N/A	N/A	Rootball	
18	Pinus sylvestris	Scots Pine	EHS	14-16cm girth	350	N/A	N/A	Rootball	
8	Prunus Accolade	Accolade Cherry	EHS	14-16cm girth	350	N/A	N/A	Rootball	
12	Prunus avium	Wild cherry	EHS	14-16cm girth	350	N/A	N/A	Rootball	
2	Prunus padus	Bird cherry	EHS	14-16cm girth	350	N/A	N/A	Rootball	
8	Quercus robur	English Oak	EHS	14-16cm girth	350	N/A	N/A	Rootball	
8	Sorbus aucuparia	Rowan	EHS	14-16cm girth	350	N/A	N/A	Rootball	
8	Tilia cordata	Small Leaved Lime	EHS	14-16cm girth	350	N/A	N/A	Rootball	
6	Pyrus calleryana 'Chanticleer'	Callery Pear	EHS	14-16cm girth	350	N/A	N/A	Rootball	

Number	Native hedge	Botanical name	Common name	Form	Min. supply size (cm)	Transplanted	% mix	Root condition
96	Acer campestre	Field Maple	Whip	60-80	1+1	20		Bare Root
120	Crataegus monogyna	Midland Hawthorn	Whip	60-80	1+1	25		Bare Root
66	Corylus avellana	Hazel	Whip	60-80	1+1	15		Bare Root
96	Cornus sanguinea	Dogwood	Whip	60-80	1+1	20		Bare Root
96	Euonymus europaeus	Spindle	Whip	60-80	1+1	20		Bare Root
66	Prunus spinosa	Blackthorn	Whip	60-80	1+1	15		Bare Root
60	Viburnum opulus	Guelder Rose	Whip	60-80	1+1	10		Bare Root

Planted in double staggered row at 45cm centres

Number	Beech hedge	Botanical name	Common name	Form	Min. supply size (cm)	Transplanted	% mix	Root condition
6	Fagus sylvatica	Beech	Whip	60-80	1+1	100		Bare Root

Planted in double staggered row at 45cm centres

Number	Infill hedge planting to west car park	Botanical name	Common name	Form	Min. supply size (cm)	Transplanted	% mix	Root condition
172	Griselinia littoralis	New Zealand broadleaf	Bushy	60-90		100		Bare Root

Number	Car park planting - shrubs	Botanical name	Common name	Form	Pot size	Transplanted	Density	Root condition
186	Sarcococca hookeriana var. humilis	Dwarf sweet box	Bushy	5L		3/sqm		Container
99	Veronica 'Caledonia'	Speedwell	Bushy	5L		3/sqm		Container

Number	Car park planting - herbaceous	Botanical name	Common name	Form	Pot size	Transplanted	Density	Root condition
120	Carex buchananii	Leatherleaf sedge		3L		5/sqm		Container
146	Bergenia cordifolia	Heart-leaf bergenia		3L		5/sqm		Container
91	Crococmia 'Lucifer'	Montbretia 'Lucifer'		3L		5/sqm		Container
197	Persicaria bistorta	Common bistort		3L		5/sqm		Container
64	Calamintha nepeta	Catmint		3L		5/sqm		Container
78	Luzula nivea	Snow rush		3L		5/sqm		Container
36	Pachysandra terminalis	Japanese spurge		3L		5/sqm		Container
80	Salvia nemerosa 'Caradonna'	Sage		3L		5/sqm		Container
79	Geranium macrorrhizum 'Bevan's Variety'	Big-root cranesbill		3L		5/sqm		Container

891

Planting Notes

General Requirements
 Planting to be undertaken into existing in-situ topsoil.
 Plants to conform to the National Plant Specification. All plant stock to originate from within the UK. Plant handling and planting operations to be in accordance with HTA 'Handling and Establishing Landscape Plants', Parts III. Existing trees to be protected with fencing as specified by the Arboriculturalist.

Utilities
 The contractor is responsible for determining the exact location of services before commencing work.
 Contractor to note presence of overhead cables as required and take suitable precautions.

Tree Planting
 Trees shown on plan to be planted with species as indicated or alternative agreed prior to ordering. Clear surface vegetation prior to excavating tree pits, pits to be nom. 1.0x1.0x0.9m depth, excavated material to be set aside for backfilling. Sides of pits to be 'roughened' to avoid 'smearing' and base broken up to aid free drainage. Pits to be backfilled with clean washed sharp sand to a depth of 0.45m and trees to be planted at nursery depth with plastic irrigation/aeration pipe around rootball, with inlet and cap, pits to be backfilled with excavated material. All trees to be secured via 2no. short timber stakes and secured to the tree trunk via bio-degradable jute ties, knotted to form a spacer. Suitable rabbit protection to be formed using 3-4 timber posts with suitable wire mesh secured to posts with full ground contact. All trees to be watered in and surface mulched to 50mm depth with bark mulch chips around base of tree. Planting to be carried out late October to late March, during suitable weather conditions, avoiding days with frost or strong, drying winds.

Hedge planting
 The roots of bare-root plants must be kept covered at all times, to prevent them drying out. Keep bare-root plants completely within a polythene sack until the moment of planting. Transplants to be notch planted or pit planted depending on soil conditions and size of roots, each with 30g 'Sierrablend Flora' slow release fertiliser, or equivalent. Ensure notch is large enough to accommodate roots without bending or breaking. Plant at the same depth transplant was grown at in the nursery. Container grown plants to be planted into pits suitable to accommodate the full spread of roots. All plants to be fitted with Tubex, or equivalent, biodegradable tree or shrub shelters according to species, securely staked and with full ground contact, or fencing to planted area. All plants to be watered in and surface mulched to 50mm depth with bark mulch chips around tubex shelter. Planting to be carried out late October to late March, during suitable weather conditions, avoiding days with frost or strong, drying winds.

Maintenance
 To ensure good establishment of planting, maintenance should be undertaken for 5 years from Practical Completion (first year to be carried out by the installing contractor). Weed control, watering and replacement of failures in the next planting season.

Rev.	Date	Note	By
G	15/04/26	Layout updated	RA
F	14/04/26	Layout updated	RA
E	26/03/26	Layout updated	RA
D	12/01/26	Cycle hub amended, planting and schedule updated	RA

AFC Bournemouth

on behalf of
 AFC Bournemouth

**LA307
 Main Works Planting Plan -
 Sheet 2 of 2**

Drawn by	Checked by	Scale
RA	RA	1:500@A1

Drawn on	Revision	Job
03.11.25	G	708720



Reproduced from the Ordnance Survey Map with the permission of the Controller of H.M. Stationery Office Crown copyright/licence number 100024244 Savills (UK) Ltd. Copyright Savills (UK) Ltd.